



RESEARCH CENTER
Saclay - Île-de-France

FIELD

Activity Report 2016

Section Software

Edition: 2017-08-25

| | |
|---|----|
| ALGORITHMICS, PROGRAMMING, SOFTWARE AND ARCHITECTURE | |
| 1. COMETE Project-Team | 4 |
| 2. DATASHAPE Team | 6 |
| 3. DEDUCTEAM Team | 7 |
| 4. GRACE Project-Team | 8 |
| 5. MEXICO Project-Team | 9 |
| 6. PARSIFAL Project-Team | 10 |
| 7. SPECFUN Project-Team | 12 |
| 8. TOCCATA Project-Team | 14 |
| APPLIED MATHEMATICS, COMPUTATION AND SIMULATION | |
| 9. COMMANDS Project-Team | 17 |
| 10. DEFI Project-Team | 18 |
| 11. DISCO Project-Team (section vide) | 20 |
| 12. GAMMA3 Project-Team | 21 |
| 13. GECO Project-Team | 28 |
| 14. POEMS Project-Team | 29 |
| 15. SELECT Project-Team | 30 |
| 16. TAO Project-Team | 32 |
| 17. TROPICAL Team | 35 |
| DIGITAL HEALTH, BIOLOGY AND EARTH | |
| 18. AMIB Project-Team | 36 |
| 19. GALEN Project-Team | 37 |
| 20. LIFEWARE Project-Team | 41 |
| 21. M3DISIM Project-Team | 42 |
| 22. PARIETAL Project-Team | 44 |
| 23. XPOP Team | 46 |
| NETWORKS, SYSTEMS AND SERVICES, DISTRIBUTED COMPUTING | |
| 24. INFINE Project-Team | 47 |
| PERCEPTION, COGNITION AND INTERACTION | |
| 25. AVIZ Project-Team | 49 |
| 26. CEDAR Team | 54 |
| 27. DAHU Project-Team (section vide) | 56 |
| 28. EX-SITU Team | 57 |
| 29. ILDA Project-Team | 59 |
| 30. SMIS Project-Team | 62 |

COMETE Project-Team

6. New Software and Platforms

6.1. libqif - A Quantitative Information Flow C++ Toolkit Library

Participants: Konstantinos Chatzikokolakis [correspondant], Susheel Suresh, Tymofii Prokopenko.

<https://github.com/chatziko/libqif>

The goal of libqif is to provide an efficient C++ toolkit implementing a variety of techniques and algorithms from the area of quantitative information flow and differential privacy. We plan to implement all techniques produced by Comète in recent years, as well as several ones produced outside the group, giving the ability to privacy researchers to reproduce our results and compare different techniques in a uniform and efficient framework.

Some of these techniques were previously implemented in an ad-hoc fashion, in small, incompatible with each-other, non-maintained and usually inefficient tools, used only for the purposes of a single paper and then abandoned. We aim at reimplementing those – as well as adding several new ones not previously implemented – in a structured, efficient and maintainable manner, providing a tool of great value for future research. Of particular interest is the ability to easily re-run evaluations, experiments and case-studies from all our papers, which will be of great value for comparing new research results in the future.

The library was under constant development in 2016 with several new features added this year. The project's git repository shows for this year 77 commits by 2 contributors, containing 5697 line additions and 4067 line removals. Some of the techniques already implemented are:

- Standard leakage measures: Shannon, min-entropy, guessing entropy
- Measures from the g -leakage framework [26]
- Channel factorization
- Hyper distribution produced by a channel run under a prior
- Standard differential privacy mechanisms from the literature
- The planar Laplace mechanism of [27]
- The planar Geometric mechanism
- The tight-constraints mechanism of [29] (also with equality constraints)
- Optimal mechanism construction under DP
- The standard Kantorovich metric as well as the multiplicative variant from [28]
- Additive capacity for specific prior over all gain functions [2]
- All operations are supported for both doubles (for precision) and floats (for memory efficiency)
- All operations involving only rational quantities are supported using arbitrary precision rational arithmetic, allowing to obtain exact results
- Native linear programming for rationals
- Simple installation in OSX via Homebrew

Many more are scheduled to be added in the near future.

6.2. D-SPACES - constraint systems with space and extrusion operators

Participants: Frank Valencia, Yamil Salim Perchy.

<http://www.lix.polytechnique.fr/~perchy/d-spaces/>

D-SPACES is an implementation of constraint systems with space and extrusion operators. Constraint systems are algebraic models that allow for a semantic language-like representation of information in systems where the concept of space is a primary structural feature. We give this information mainly an epistemic interpretation and consider various agents as entities acting upon it. D-SPACES is coded as a c++11 library providing implementations for constraint systems, space functions and extrusion functions. The interfaces to access each implementation are minimal and thoroughly documented. D-SPACES also provides property-checking methods as well as an implementation of a specific type of constraint systems (a boolean algebra). This last implementation serves as an entry point for quick access and proof of concept when using these models. In [22] an illustrative example of using the library is given, in the form of a small social network where users post their beliefs and utter their opinions.

6.3. Trace Slicer for Timed Concurrent Constraint Programming

Participants: Catuscia Palamidessi, Carlos Olarte.

<http://subsell.logic.at/slicer/>

Concurrent Constraint Programming (CCP) is a declarative model for concurrency aimed at specifying reactive systems, i.e. systems that continuously interact with the environment. Some previous works have developed (approximated) declarative debuggers for CCP languages. However, the task of debugging concurrent programs remains difficult. This tool is a companion for the existing debugging techniques. Slicing in our proposal consists of considering partial computations, which show the presence of bugs. Often, the quantity of information in a trace is overwhelming, and the user gets easily lost, since she cannot focus on the sources of the bugs. Our slicer allows for marking part of the state of the computation and assists the user to eliminate most of the redundant information in order to highlight the errors. See [19] for further details.

DATASHAPE Team

6. New Software and Platforms

6.1. GUDHI

Geometric Understanding in Higher Dimensions

SCIENTIFIC DESCRIPTION

The current release of the GUDHI library includes:

- Data structures to represent, construct and manipulate simplicial and cubical complexes.
- Algorithms to compute simplicial complexes from point cloud data.
- Algorithms to compute persistent homology and multi-field persistent homology.
- Simplification methods via implicit representations.

FUNCTIONAL DESCRIPTION

The GUDHI open source library will provide the central data structures and algorithms that underlie applications in geometry understanding in higher dimensions. It is intended to both help the development of new algorithmic solutions inside and outside the project, and to facilitate the transfer of results in applied fields.

- Participants: Jean-Daniel Boissonnat, Marc Glisse, Mariette Yvinec, Clément Maria, David Salinas, Paweł Dłotko, Siargey Kachanovich and Vincent Rouvreau
- Contact: Jean-Daniel Boissonnat
- URL: <http://gudhi.gforge.inria.fr/>

DEDUCTEAM Team

5. New Software and Platforms

5.1. Software of the team

Deducteam develops several kinds of tools or libraries:

- Proof checkers:
 - Dedukti: proof checker for the $\lambda\Pi$ -calculus modulo rewriting
 - Sukerujo: extension of Dedukti with syntactic constructions for records, strings, lists, etc.
 - Rainbow: CPF termination certificate verifier
- Tools for translating into Dedukti's proof format proofs coming from various other provers:
 - Coqine translates Coq proofs
 - Focalide translates Focalize proofs
 - Holide translates OpenTheory proofs (HOL-Light, HOL4, ProofPower)
 - Krajono translates Matita proofs
 - Sigmaid translates ζ -calculus
- Automated theorem provers:
 - iProverModulo: theorem prover based on polarized resolution modulo
 - SuperZenon: extension of Zenon using superdeduction
 - ZenonArith: extension of Zenon using the simplex algorithm for arithmetic
 - ZenonModulo: extension of Zenon using deduction modulo and producing Dedukti proofs
 - Zipperposition: superposition prover featuring arithmetic and induction
 - HOT: automated termination prover for higher-order rewrite systems
 - Archsat: theorem prover using tableaux-like rules with a SAT core
- Libraries or generation tools:
 - CoLoR: Coq library on rewriting theory and termination
 - Logtk: library for first-order automated reasoning
 - mSat: modular SAT/SMT solver with proof output
 - Moca: generator of construction functions for types with relations on constructors

5.2. Novelties of the year

The main novelties this year are:

- CoLoR has been ported to Coq 8.5.
- F. Blanqui started to develop a prototype for developing Dedukti proofs interactively.

GRACE Project-Team

6. New Software and Platforms

6.1. ACTIS

FUNCTIONAL DESCRIPTION

The aim of this project is to vastly improve the state of the error correcting library in Sage. The existing library does not present a good and usable API, and the provided algorithms are very basic, irrelevant, and outdated. We thus have two directions for improvement: renewing the APIs to make them actually usable by researchers, and incorporating efficient programs for decoding, like J. Nielsen's CodingLib, which contains many new algorithms.

- Contact: David Lucas
- <https://bil.inria.fr/fr/software/view/2114/tab>

During the project, D. Lucas and J. Nielsen proposed a google summer of code [project on rank-metric codes](#) under our ACTIS framework. The intern was Arpit Merchant, who visited us for SageDays75.

6.2. muKummer

KEYWORD: Cryptography

FUNCTIONAL DESCRIPTION

A competitive, high-speed, open implementation of the Diffie–Hellman key exchange protocol and a Schnorr-type digital signature scheme, targeting the 128-bit security level on two microcontroller platforms: the classic AVR ATmega 8-bit platform and the more modern ARM Cortex M0 32-bit platform. These downloads contain mixed C and assembly sources for the implementations described in [16].

- Participant: Benjamin Smith
- Contact: Benjamin Smith
- ATmega implementation URL: <http://www.cs.ru.nl/~jrenes/software/mukummer-avr.tar.gz>
- Cortex M0 implementation URL: <http://www.cs.ru.nl/~jrenes/software/mukummer-arm.tar.gz>

MEXICO Project-Team

6. New Software and Platforms

6.1. DarkSider

FUNCTIONAL DESCRIPTION

DarkSider computes anti-alignments between a Petri net model and a log of observed traces, as described in [15], [25].

- Participant: Thomas Chatain
- Contact: Thomas Chatain
- URL: <http://www.lsv.ens-cachan.fr/~chatain/darksider/>

6.2. COSMOS

FUNCTIONAL DESCRIPTION

COSMOS is a statistical model checker for the Hybrid Automata Stochastic Logic (HASL). HASL employs Linear Hybrid Automata (LHA), a generalization of Deterministic Timed Automata (DTA), to describe accepting execution paths of a Discrete Event Stochastic Process (DESP), a class of stochastic models which includes, but is not limited to, Markov chains. As a result HASL verification turns out to be a unifying framework where sophisticated temporal reasoning is naturally blended with elaborate reward-based analysis. COSMOS takes as input a DESP (described in terms of a Generalized Stochastic Petri Net), an LHA and an expression Z representing the quantity to be estimated. It returns a confidence interval estimation of Z , recently, it has been equipped with functionalities for rare event analysis. COSMOS is written in C++

- Participants: Benoît Barbot, Hilal Djafri, Paolo Ballarini, Marie Duflot-Kremer and Serge Haddad
- Contact: Hilal Djafri
- URL: <http://www.lsv.ens-cachan.fr/~barbot/cosmos/>

6.3. CosyVerif

FUNCTIONAL DESCRIPTION

CosyVerif is a platform dedicated to the formal specification and verification of dynamic systems. It allows to specify systems using several formalisms (such as automata and Petri nets), and to run verification tools on these models.

- Participants: Serge Haddad, Fabrice Kordon, Laure Petrucci and Alban Linard
- Partners: LIP6 - LIPN (Laboratoire d'Informatique de l'Université Paris Nord) - LSV
- Contact: Serge Haddad
- URL: <http://www.cosyverif.org/>

6.4. Mole

FUNCTIONAL DESCRIPTION

Mole computes, given a safe Petri net, a finite prefix of its unfolding. It is designed to be compatible with other tools, such as PEP and the Model-Checking Kit, which are using the resulting unfolding for reachability checking and other analyses. The tool Mole arose out of earlier work on Petri nets.

- Participant: Stefan Schwoon
- Contact: Stefan Schwoon
- URL: <http://www.lsv.ens-cachan.fr/~schwoon/tools/mole/>

PARSIFAL Project-Team

6. New Software and Platforms

6.1. Abella

FUNCTIONAL DESCRIPTION

Abella is an interactive theorem prover for reasoning about computations given as relational specifications. Abella is particularly well suited for reasoning about binding constructs.

- Participants: Dale Miller, Olivier Savary-Bélanger, Mary Southern, Yuting Wang, Kaustuv Chaudhuri, Matteo Cimini and Gopalan Nadathur
- Partner: Department of Computer Science and Engineering, University of Minnesota
- Contact: Kaustuv Chaudhuri
- URL: <http://abella-prover.org/>

6.2. Bedwyr

Bedwyr - A proof search approach to model checking

FUNCTIONAL DESCRIPTION

Bedwyr is a generalization of logic programming that allows model checking directly on syntactic expression that possibly contain bindings. This system, written in OCaml, is a direct implementation of two recent advances in the theory of proof search.

It is possible to capture both finite success and finite failure in a sequent calculus. Proof search in such a proof system can capture both may and must behavior in operational semantics. Higher-order abstract syntax is directly supported using term-level lambda-binders, the nabla quantifier, higher-order pattern unification, and explicit substitutions. These features allow reasoning directly on expressions containing bound variables.

The distributed system comes with several example applications, including the finite pi-calculus (operational semantics, bisimulation, trace analyses, and modal logics), the spi-calculus (operational semantics), value-passing CCS, the lambda-calculus, winning strategies for games, and various other model checking problems.

- Participants: Quentin Heath, Roberto Blanco, and Dale Miller
- Contact: Quentin Heath
- URL: <http://slimmer.gforge.inria.fr/bedwyr/>

6.3. Checkers

Checkers - A proof verifier

KEYWORDS: Proof - Certification - Verification

FUNCTIONAL DESCRIPTION

Checkers is a tool in Lambda-prolog for the certification of proofs. Checkers consists of a kernel which is based on LKF and is based on the notion of ProofCert.

- Participants: Tomer Libal, Giselle Machado Nogueira Reis and Marco Volpe
- Contact: Tomer Libal
- URL: <https://github.com/proofcert/checkers>

6.4. Psyche

Proof-Search factorY for Collaborative HEuristics

FUNCTIONAL DESCRIPTION

Psyche is a modular platform for automated or interactive theorem proving, programmed in OCaml and built on an architecture (similar to LCF) where a trusted kernel interacts with plugins. The kernel offers an API of proof-search primitives, and plugins are programmed on top of the API to implement search strategies. This architecture is set up for pure logical reasoning as well as for theory-specific reasoning, for various theories. The major effort in 2016 was the release of version 2.1 that allows the combination of theories, integrating and subsuming both the Nelson-Oppen methodology [79] and the *model constructing satisfiability* (MCSAT) methodology recently proposed by De Moura and Jovanovic [89], [65].

- Participants: Assia Mahboubi, Jean-Marc Notin and Stéphane Graham-Lengrand
- Contact: Stéphane Graham-Lengrand
- URL: <http://www.lix.polytechnique.fr/~lengrand/Psyche/>

SPECFUN Project-Team

5. New Software and Platforms

5.1. DDMF

Dynamic Dictionary of Mathematical Functions

FUNCTIONAL DESCRIPTION

Web site consisting of interactive tables of mathematical formulas on elementary and special functions. The formulas are automatically generated by OCaml and computer-algebra routines. Users can ask for more terms of the expansions, more digits of the numerical values, proofs of some of the formulas, etc.

This year, Maxence Guesdon started to port DDMF to the new DynaMoW. To this end, a special environment has been set up to be able to use the Inria continuous-integration platform.

- Participants: Alexandre Benoit, Frédéric Chyzak, Alexis Darrasse, Stefan Gerhold, Thomas Grégoire, Maxence Guesdon, Christoph Koutschan, Marc Mezzarobba and Bruno Salvy
- Contact: Frédéric Chyzak
- URL: <http://ddmf.msr-inria.inria.fr/1.9.1/ddmf>

5.2. DynaMoW

Dynamic Mathematics on the Web

FUNCTIONAL DESCRIPTION

DynaMoW is a programming tool for controlling the generation of mathematical websites that embed dynamical mathematical contents generated by computer-algebra calculations. Implemented in OCaml.

After a complete redesign and rewrite last year, to get more reactivity and configurability, the implementation of DynaMoW was made more robust this year while porting ECS to this new library. It was next further enhanced, in particular in order to have informative and reliable traces of execution, to help with the debugging of asynchronous parallel executions of services.

- Participants: Frédéric Chyzak, Alexis Darrasse and Maxence Guesdon
- Contact: Frédéric Chyzak
- URL: <http://ddmf.msr-inria.inria.fr/DynaMoW/>

5.3. ECS

Encyclopedia of Combinatorial Structures

FUNCTIONAL DESCRIPTION

ECS is an online mathematical encyclopedia with an emphasis on sequences that arise in the context of decomposable combinatorial structures, with the possibility to search by the first terms in the sequence, keyword, generating function, or closed form.

This year, we finalized the port of ECS to the last evolutions of DynaMoW. A new website was setup, and ECS is now again online, after a few years of discontinuation for technical reasons.

- Participants: Stéphanie Petit, Alexis Darrasse, Frédéric Chyzak and Maxence Guesdon
- Contact: Frédéric Chyzak
- URL: <http://ecs.inria.fr/>

5.4. Math-Components

Mathematical Components library

FUNCTIONAL DESCRIPTION

The Mathematical Components library is a set of Coq libraries that cover the mechanization of the proof of the Odd Order Theorem.

This year we experimented the maintenance of the library using the public repository stored on the github platform since December 2015. This allowed for merging several contributions from external users and improved significantly the communication with the community of users. A new website has also been set up, which includes pointers to various teaching and documentation resources.

- Participants: Andrea Asperti, Jeremy Avigad, Yves Bertot, Cyril Cohen, Francois Garillot, Georges Gonthier, Stéphane Le Roux, Assia Mahboubi, Sidi Ould Biha, Ioana Pasca, Laurence Rideau, Alexey Solovyev, Enrico Tassi and Russell O'connor
- Contact: Assia Mahboubi
- URL: <http://www.msr-inria.fr/projects/mathematical-components-2/>

5.5. Ssreflect

FUNCTIONAL DESCRIPTION

Ssreflect is a tactic language extension to the Coq system, developed by the Mathematical Components team. This year we improved the manual of the language, in order to document new features and to clarify some older parts of the document.

- Participants: Cyril Cohen, Yves Bertot, Laurence Rideau, Enrico Tassi, Laurent Thery, Assia Mahboubi and Georges Gonthier
- Contact: Yves Bertot
- URL: <http://ssr.msr-inria.inria.fr/>

TOCCATA Project-Team

6. New Software and Platforms

6.1. Alt-Ergo

Automated theorem prover for software verification

KEYWORDS: Software Verification - Automated theorem proving

FUNCTIONAL DESCRIPTION

Alt-Ergo is an automatic solver of formulas based on SMT technology. It is especially designed to prove mathematical formulas generated by program verification tools, such as Frama-C for C programs, or SPARK for Ada code. Initially developed in Toccata research team, Alt-Ergo's distribution and support are provided by OCamlPro since September 2013.

- Participants: Sylvain Conchon, Evelyne Contejean, Mohamed Iguernelala, Stephane Lescuyer and Alain Mepsout
- Partner: OCamlPro
- Contact: Sylvain Conchon
- URL: <http://alt-ergo.lri.fr>

6.2. CFML

Interactive program verification using characteristic formulae

KEYWORDS: Coq - Software Verification - Deductive program verification - Separation Logic

FUNCTIONAL DESCRIPTION

The CFML tool supports the verification of OCaml programs through interactive Coq proofs. CFML proofs establish the full functional correctness of the code with respect to a specification. They may also be used to formally establish bounds on the asymptotic complexity of the code. The tool is made of two parts: on the one hand, a characteristic formula generator implemented as an OCaml program that parses OCaml code and produces Coq formulae, and, on the other hand, a Coq library that provides notation and tactics for manipulating characteristic formulae interactively in Coq.

- Contact: Arthur Chargueraud
- URL: <http://www.chargueraud.org/softs/cfml/>

6.3. Coq

KEYWORDS: Proof - Certification - Formalisation

FUNCTIONAL DESCRIPTION

Coq provides both a dependently-typed functional programming language and a logical formalism, which, altogether, support the formalisation of mathematical theories and the specification and certification of properties of programs. Coq also provides a large and extensible set of automatic or semi-automatic proof methods. Coq's programs are extractible to OCaml, Haskell, Scheme, ...

- Participants: Benjamin Gregoire, Enrico Tassi, Bruno Barras, Yves Bertot, Pierre Boutillier, Xavier Clerc, Pierre Courtieu, Maxime Denes, Stephane Glondu, Vincent Gross, Hugo Herbelin, Pierre Letouzey, Assia Mahboubi, Julien Narboux, Jean-Marc Notin, Christine Paulin-Mohring, Pierre-Marie Pedrot, Loic Pottier, Matthias Puech, Yann Regis-Gianas, François Ripault, Matthieu Sozeau, Arnaud Spiwack, Pierre-Yves Strub, Benjamin Werner, Guillaume Melquiond and Jean-Christophe Filliatre
- Partners: CNRS - ENS Lyon - Université Paris-Diderot - Université Paris-Sud
- Contact: Hugo Herbelin
- URL: <http://coq.inria.fr/>

6.4. CoqInterval

Interval package for Coq

KEYWORDS: Interval arithmetic - Coq

FUNCTIONAL DESCRIPTION

CoqInterval is a library for the proof assistant Coq. CoqInterval provides a method for proving automatically the inequality of two expression of real values.

The Interval package provides several tactics for helping a Coq user to prove theorems on enclosures of real-valued expressions. The proofs are performed by an interval kernel which relies on a computable formalization of floating-point arithmetic in Coq.

The Marelle team developed a formalization of rigorous polynomial approximation using Taylor models inside the Coq proof assistant, with a special focus on genericity and efficiency for the computations. In 2014, this library has been included in CoqInterval.

- Participants: Guillaume Melquiond, Erik Martin Dorel, Nicolas Brisebarre, Miora Maria Joldes, Micaela Mayero, Jean Michel Muller, Laurence Rideau and Laurent They
- Contact: Guillaume Melquiond
- URL: <http://coq-interval.gforge.inria.fr/>

6.5. Coquelicot

The Coquelicot library for real analysis in Coq

KEYWORDS: Coq - Real analysis

FUNCTIONAL DESCRIPTION

Coquelicot is library aimed for supporting real analysis in the Coq proof assistant. It is designed with three principles in mind. The first is the user-friendliness, achieved by implementing methods of automation, but also by avoiding dependent types in order to ease the stating and readability of theorems. This latter part was achieved by defining total function for basic operators, such as limits or integrals. The second principle is the comprehensiveness of the library. By experimenting on several applications, we ensured that the available theorems are enough to cover most cases. We also wanted to be able to extend our library towards more generic settings, such as complex analysis or Euclidean spaces. The third principle is for the Coquelicot library to be a conservative extension of the Coq standard library, so that it can be easily combined with existing developments based on the standard library.

- Participants: Sylvie Boldo, Catherine Lelay and Guillaume Melquiond
- Contact: Sylvie Boldo
- URL: <http://coquelicot.saclay.inria.fr/>

6.6. Cubicle

The Cubicle model checker modulo theories

KEYWORDS: Model Checking - Software Verification

FUNCTIONAL DESCRIPTION

Cubicle is an open source model checker for verifying safety properties of array-based systems, which corresponds to a syntactically restricted class of parametrized transition systems with states represented as arrays indexed by an arbitrary number of processes. Cache coherence protocols and mutual exclusion algorithms are typical examples of such systems.

- Participants: Sylvain Conchon and Alain Mebsout
- Contact: Sylvain Conchon
- URL: <http://cubicle.lri.fr/>

6.7. Flocq

The Flocq library for formalizing floating-point arithmetic in Coq

KEYWORDS: Floating-point - Arithmetic code - Coq

FUNCTIONAL DESCRIPTION

The Flocq library for the Coq proof assistant is a comprehensive formalization of floating-point arithmetic: core definitions, axiomatic and computational rounding operations, high-level properties. It provides a framework for developers to formally certify numerical applications.

Flocq is currently used by the CompCert certified compiler for its support of floating-point computations.

- Participants: Guillaume Melquiond and Sylvie Boldo
- Contact: Sylvie Boldo
- URL: <http://flocq.gforge.inria.fr/>

6.8. Gappa

The Gappa tool for automated proofs of arithmetic properties

KEYWORDS: Floating-point - Arithmetic code - Software Verification - Constraint solving

FUNCTIONAL DESCRIPTION

Gappa is a tool intended to help verifying and formally proving properties on numerical programs dealing with floating-point or fixed-point arithmetic. It has been used to write robust floating-point filters for CGAL and it is used to certify elementary functions in CRLibm. While Gappa is intended to be used directly, it can also act as a backend prover for the Why3 software verification platform or as an automatic tactic for the Coq proof assistant.

- Contact: Guillaume Melquiond
- URL: <http://gappa.gforge.inria.fr/>

6.9. Why3

The Why3 environment for deductive verification

KEYWORDS: Formal methods - Trusted software - Software Verification - Deductive program verification

FUNCTIONAL DESCRIPTION

Why3 is an environment for deductive program verification. It provides a rich language for specification and programming, called WhyML, and relies on external theorem provers, both automated and interactive, to discharge verification conditions. Why3 comes with a standard library of logical theories (integer and real arithmetic, Boolean operations, sets and maps, etc.) and basic programming data structures (arrays, queues, hash tables, etc.). A user can write WhyML programs directly and get correct-by-construction OCaml programs through an automated extraction mechanism. WhyML is also used as an intermediate language for the verification of C, Java, or Ada programs.

- Participants: Jean-Christophe Filliatre, Claude Marche, Guillaume Melquiond, Andriy Paskevych, François Bobot, Martin Clochard and Levs Gondelmanns
- Partners: CNRS - Université Paris-Sud
- Contact: Claude Marche
- URL: <http://why3.lri.fr/>

COMMANDS Project-Team

6. New Software and Platforms

6.1. BOCOP

Boite à Outils pour le Contrôle OPTimal

KEYWORDS: Energy management - Numerical optimization - Biology - Identification - Dynamic Optimization - Transportation

FUNCTIONAL DESCRIPTION

Bocop is an open-source toolbox for solving optimal control problems, with collaborations with industrial and academic partners. Optimal control (optimization of dynamical systems governed by differential equations) has numerous applications in transportation, energy, process optimization, energy and biology. Bocop includes a module for parameter identification and a graphical interface, and runs under Linux / Windows / Mac.

- Participants: Joseph Frédéric Bonnans, Pierre Martinon, Benjamin Heymann and Jinyan Liu
- Contact: Pierre Martinon
- URL: <http://bocop.org>

6.2. Bocop Avion

KEYWORDS: Optimization - Aeronautics

FUNCTIONAL DESCRIPTION

Optimize the climb speeds and associated fuel consumption for the flight planning of civil airplanes.

- Participants: Joseph Frédéric Bonnans, Pierre Martinon, Stéphane Maindrault, Cindie Andrieu, Pierre Jouniaux and Karim Tekkal
- Contact: Pierre Martinon
- URL: <http://www.safety-line.fr>

6.3. Bocop HJB

- Participants: Joseph Frédéric Bonnans, Pierre Martinon, Benjamin Heymann and Jinyan Liu
- Contact: Joseph Frédéric Bonnans
- URL: <http://bocop.org>

DEFI Project-Team

6. New Software and Platforms

6.1. FVforBlochTorrey

FUNCTIONAL DESCRIPTION

We developed two numerical codes to solve the multiple-compartments Bloch-Torrey partial differential equation in 2D and 3D to simulate the water proton magnetization of a sample under the influence of diffusion-encoding magnetic field gradient pulses.

We coupled the spatial discretization with an efficient time discretization adapted to diffusive problems called the (explicit) Runge-Kutta-Chebyshev method.

The version of the code using Finite Volume discretization on a Cartesian grid is complete (written by Jing-Rebecca Li). The version of the code using linear Finite Elements discretization is complete (written by Dang Van Nguyen and Jing-Rebecca Li).

- Contact: Jing Rebecca Li
- URL: <http://www.cmap.polytechnique.fr/~jingrebeccali/>

6.2. InvGIBC

A FreeFem++ routines for solving inverse Maxwell's problem for 3D shape identification using a gradient descent method.

- Contact: Housseem Haddar
- URL: <http://www.cmap.polytechnique.fr/~haddar/>

6.3. RODIN

FUNCTIONAL DESCRIPTION

In the framework of the RODIN project we continue to develop with our software partner ESI the codes Topolev and Geolev for topology and geometry shape optimization of mechanical structures using the level set method.

- Contact: Grégoire Allaire
- URL: <http://www.cmap.polytechnique.fr/~allaire/>

6.4. Samplings-3d

FUNCTIONAL DESCRIPTION

This software is written in Fortran 90 and is related to forward and inverse problems for the Helmholtz equation in 3-D. It contains equivalent functionalities to samplings-2d in a 3-D setting.

- Contact: Housseem Haddar
- URL: <http://www.cmap.polytechnique.fr/~haddar/>

6.5. samplings-2d

This software solves forward and inverse problems for the Helmholtz equation in 2-D.

FUNCTIONAL DESCRIPTION

This software is written in Fortran 90 and is related to forward and inverse problems for the Helmholtz equation in 2-D. It includes three independent components. The first one solves to scattering problem using integral equation approach and supports piecewise-constant dielectrics and obstacles with impedance boundary conditions. The second one contains various samplings methods to solve the inverse scattering problem (LSM, RGLSM(s), Factorization, MuSiC) for near-field or far-field setting. The third component is a set of post processing functionalities to visualize the results

- Contact: Housseem Haddar
- URL: <http://sourceforge.net/projects/samplings-2d/>

6.6. SAXS-EM

This software solves the inverse problem of determining nono-paticles size distrubutions from SAXS measurements.

FUNCTIONAL DESCRIPTION

This software is written in matlab and determine size distributions is isotropic samples from measurements of X-ray diffraction at small angles. It treats the case of diluted and dense particle distributions.

- Contact: Housseem Haddar, Zixian Jiang
- URL: <http://www.cmap.polytechnique.fr/~haddar/>

DISCO Project-Team (section vide)

GAMMA3 Project-Team

3. New Software and Platforms

3.1. ABL4FLO

FUNCTIONAL DESCRIPTION

KEYWORDS: Boundary layer - Hybrid meshes

SCIENTIFIC DESCRIPTION

Automatic boundary layer mesh generation for complex geometries

FUNCTIONAL DESCRIPTION

ABL4FLO is designed to generate 3D adapted boundary layer meshes by using a cavity-based operator.

- Participant: Adrien Loseille
- Contact: Adrien Loseille
- URL: <https://www.rocq.inria.fr/gamma/Adrien.Loseille/index.php?page=softwares>

3.2. AMA4FLO

FUNCTIONAL DESCRIPTION

KEYWORDS: Anisotropic mesh adaptation - Surface and volume remeshing - Non manifold geometries

SCIENTIFIC DESCRIPTION

Robust and automatic generation of anisotropic meshes in 3D

FUNCTIONAL DESCRIPTION

AMA4FLO is designed to generate adapted meshes with respect to a provided anisotropic sizing field. The surface and the volume mesh is adapted simultaneously to guarantee that a 3D valid mesh is provided on output.

- Participant: Adrien Loseille
- Contact: Adrien Loseille
- URL: <https://www.rocq.inria.fr/gamma/Adrien.Loseille/index.php?page=softwares>

3.3. BL2D

KEYWORDS: Automatic mesher - Delaunay - Anisotropic - Planar domain

SCIENTIFIC DESCRIPTION

The meshing method is of controlled Delaunay type, isotropic or anisotropic. The internal point generation follows an advancing-front logic, and their connection is realized as in a classical Delaunay approach. Quadrilaterals are obtained by a pairing process. The direct construction of degree 2 elements has been made possible via the control of the domain boundary mesh, in order to ensure the desired compatibility.

FUNCTIONAL DESCRIPTION

Planar mesh generator (isotropic or anisotropic, adaptive).

- Participants: Houman Borouchaki and Patrick Laug
- Contact: Patrick Laug
- URL: <https://www.rocq.inria.fr/gamma/Patrick.Laug/logiciels/logiciels.html>

3.4. BL2D-ABAQ

KEYWORDS: Automatic mesher - Delaunay - Anisotropic - Planar domain - Error estimation - Interpolation

SCIENTIFIC DESCRIPTION

The meshing method is the same as BL2D (see above) in an adaptive process. An *a posteriori* error estimation of a solution at the nodes of the current mesh results in a size map. A new mesh satisfying these size specifications (made continuous) is built, and the solution is interpolated on the new mesh.

FUNCTIONAL DESCRIPTION

Planar mesh generator (isotropic or anisotropic, adaptive) for deformable domains, interacting with the ABAQUS solver.

- Participants: Houman Borouchaki, Patrick Laug and Abel Cherouat
- Contact: Patrick Laug
- URL: <https://www.rocq.inria.fr/gamma/Patrick.Laug/logiciels/logiciels.html>

3.5. BLGEOL

KEYWORDS: Automatic mesher - Hex-dominant - Geologic structures

SCIENTIFIC DESCRIPTION

The aim is to generate hex-dominant meshes of geologic structures complying with different geometric constraints: surface topography (valleys, reliefs, rivers), geologic layers and underground workings. First, a reference 2D domain is obtained by projecting all the line constraints into a horizontal plane. Different size specifications are given for rivers, outcrop lines and workings. Using an adaptive methodology, the size variation is bounded by a specified threshold in order to obtain a high quality quad-dominant mesh. Secondly, a hex-dominant mesh of the geological medium is generated by a vertical extrusion, taking into account the surfaces found (interfaces between two layers, top or bottom faces of underground workings). The generation of volume elements follows a global order established on the whole set of surfaces to ensure the conformity of the resulting mesh.

FUNCTIONAL DESCRIPTION

Hex-dominant mesher of geologic structures and storage facilities.

- Participants: Patrick Laug and Houman Borouchaki
- Contact: Patrick Laug
- URL: <https://www.rocq.inria.fr/gamma/Patrick.Laug/logiciels/logiciels.html>

3.6. BLMOL

KEYWORDS: Automatic mesher - Molecular surface

SCIENTIFIC DESCRIPTION

To model a molecular surface, each constituting atom is idealized by a simple sphere. First, a boundary representation (B-rep) of the surface is obtained, i.e. a set of patches and the topological relations between them. Second, an appropriate parametrization and a metric map are computed for each patch. Third, meshes of the parametric domains are generated with respect to an induced metric map, using a combined advancing-front generalized-Delaunay approach. Finally these meshes are mapped onto the entire surface.

FUNCTIONAL DESCRIPTION

Molecular surface mesher.

- Participants: Houman Borouchaki and Patrick Laug
- Contact: Patrick Laug
- URL: <https://www.rocq.inria.fr/gamma/Patrick.Laug/logiciels/logiciels.html>

3.7. BLSURF

KEYWORDS: Automatic mesher - Parametric surface - CAD surface

SCIENTIFIC DESCRIPTION

An indirect method for meshing parametric surfaces conforming to a user-specifiable size map is used. First, from this size specification, a Riemannian metric is defined so that the desired mesh should have unit length edges with respect to the related Riemannian space (the so-called “unit mesh”). Then, based on the intrinsic properties of the surface, the Riemannian structure is induced into the parametric space. Finally, a unit mesh is generated completely inside the parametric space such that it conforms to the metric of the induced Riemannian structure. This mesh is constructed using a combined advancing-front Delaunay approach applied within a Riemannian context.

FUNCTIONAL DESCRIPTION

CAD surface mesher.

- Participants: Houman Borouchaki and Patrick Laug
- Contact: Patrick Laug
- URL: <https://www.rocq.inria.fr/gamma/Patrick.Laug/logiciels/logiciels.html>

3.8. FEFLOA-REMESH

KEYWORDS: Anisotropic mesh adaptation - Surface remeshing - Cavity-based operator

SCIENTIFIC DESCRIPTION

Automatic generation of metric-aligned and metric-orthogonal anisotropic meshes in 3D

FUNCTIONAL DESCRIPTION

FEFLOA-REMESH is intended to generate adapted 2D, surface and volume meshes by using a unique cavity-based operator. The metric-aligned or metric-orthogonal approach is used to generate high quality surface and volume meshes independently of the anisotropy involved.

- Participants: Adrien Loseille and Frédéric Alauzet
- Contact: Adrien Loseille
- URL: <https://www.rocq.inria.fr/gamma/Adrien.Loseille/index.php?page=softwares>

3.9. GAMANIC 3D

KEYWORDS: Tetrahedral mesh - Delaunay - Anisotropic size and direction control - Automatic Mesher

SCIENTIFIC DESCRIPTION

Automatic tetrahedral mesher based on an anisotropic Delaunay type point insertion method. A metric field is provided specifying the desired size (edge length) and directional properties.

FUNCTIONAL DESCRIPTION

GAMANIC3D is a volume mesher governed by a (anisotropic) size and directional specification metric field.

- Participants: Houman Borouchaki, Paul Louis George, Frederic Hecht, Eric Saltel, Frédéric Alauzet and Adrien Loseille
- Contact: Paul Louis George
- URL: <http://www.meshgems.com/volume-meshing.html>

3.10. GAMHIC 3D

KEYWORDS: Tetrahedral mesh - Delaunay - Isotropic size control - Automatic Mesher

SCIENTIFIC DESCRIPTION

Automatic tetrahedral mesher based on the Delaunay point insertion method. A metric field is provided specifying the desired size (edge length).

FUNCTIONAL DESCRIPTION

GAMHIC3D is a volume mesher governed by a (isotropic) size specification metric field.

- Participants: Houman Borouchaki, Paul Louis George, Frederic Hecht, Eric Saltel, Frédéric Alauzet and Adrien Loseille
- Contact: Paul Louis George
- URL: <http://www.meshgems.com/volume-meshing.html>

3.11. GHS3D

KEYWORDS: Tetrahedral mesh - Delaunay - Automatic Mesher

SCIENTIFIC DESCRIPTION

Automatic tetrahedral mesher based on the Delaunay point insertion method.

FUNCTIONAL DESCRIPTION

GHS3D is an automatic volume mesher

- Participants: Paul Louis George, Houman Borouchaki, Eric Saltel, Frédéric Alauzet, Adrien Loseille and Frederic Hecht
- Contact: Paul Louis George
- URL: <http://www.meshgems.com/volume-meshing.html>

3.12. HEXOTIC

KEYWORDS: Hexahedral mesh - Octree - Automatic mesher

SCIENTIFIC DESCRIPTION

Automatic full hexahedral mesher primarily based on an octree.

FUNCTIONAL DESCRIPTION

HEXOTIC is an automatic hexahedral mesher

- Contact: Loïc Maréchal
- URL: <https://www.rocq.inria.fr/gamma/gamma/Membres/CIPD/Loic.Marechal/Research/Hexotic.html>

3.13. Metrix

KEYWORD: Scientific calculation

SCIENTIFIC DESCRIPTION

Compute a metric field from a given solution field using various error estimates.

FUNCTIONAL DESCRIPTION

Metrix computes metric field from a given solution field using various error estimates. Available error estimates are feature-based and goal-oriented based error estimates for steady or unsteady fields. Metrix also performs operations on metrics: gradation, intersection, natural metric of a mesh.

- Participants: Frédéric Alauzet and Adrien Loseille
- Contact: Frédéric Alauzet
- URL: https://www.rocq.inria.fr/gamma/Frederic.Alauzet/code_eng.html

3.14. Nimbus 3D

KEYWORDS: Surface reconstruction - Point cloud

SCIENTIFIC DESCRIPTION

Given a point cloud, a surface is constructed primarily based on a Delaunay approach.

FUNCTIONAL DESCRIPTION

Nimbus3D is a surface reconstruction method piece of software

- Participants: Paul Louis George and Houman Borouchaki
- Contact: Paul Louis George
- URL: <http://www.meshgems.com/volume-meshing.html>

3.15. VIZIR

KEYWORDS: Mesh and solution visualization

SCIENTIFIC DESCRIPTION

Interactive mesh and solution visualization for linear, and high order curved elements

FUNCTIONAL DESCRIPTION

VIZIR is intended to visualize and modify interactively simplicial, hybrid and high order curved meshes.

- Participants: Julien Castelneau, Adrien Loseille and Alexis Loyer
- Contact: Adrien Loseille
- URL: <http://www-roc.inria.fr/gamma/gamma/vizir/>

3.16. Wolf

KEYWORD: Scientific calculation

SCIENTIFIC DESCRIPTION

General solver platform containing all the Wolf modules: Wolf-Bloom, Wolf-Elast, Wolf-Interpol, Wolf-MovMsh, Wolf-Nsc, Wolf-Shrimp, Wolf-Spyder and Wolf-Xfem, for details see thereafter.

FUNCTIONAL DESCRIPTION

Wolf is a general solver platform containing all the Wolf modules: Wolf-Bloom, Wolf-Elast, Wolf-Interpol, Wolf-MovMsh, Wolf-Nsc, Wolf-Shrimp, Wolf-Spyder and Wolf-Xfem.

- Participants: Frédéric Alauzet and Adrien Loseille
- Contact: Frédéric Alauzet
- URL: https://www.rocq.inria.fr/gamma/Frederic.Alauzet/code_eng.html

3.17. Wolf-Bloom

KEYWORD: Scientific calculation

SCIENTIFIC DESCRIPTION

Structured boundary layer mesh generator using a pushing approach.

FUNCTIONAL DESCRIPTION

Wolf-Bloom is a structured boundary layer mesh generator using a pushing approach. It start from an existing volume mesh and insert a structured boundary layer by pushing the volume mesh. The volume mesh deformation is solved with an elasticity analogy. Mesh-connectivity optimizations are performed to control volume mesh element quality.

- Participants: Frédéric Alauzet, Adrien Loseille and Dave Marcum
- Contact: Frédéric Alauzet
- URL: https://www.rocq.inria.fr/gamma/Frederic.Alauzet/code_eng.html

3.18. Wolf-Elast

KEYWORD: Scientific calculation

SCIENTIFIC DESCRIPTION

Linear elasticity solver using a P1 Finite-Element method.

FUNCTIONAL DESCRIPTION

Wolf-Elast is a linear elasticity solver using a P1 Finite-Element method. The Young and Poisson coefficient can be parametrized. The linear system is solved using the Conjugate Gradient method with the LUSGS preconditioner.

- Participants: Frédéric Alauzet and Adrien Loseille
- Contact: Frédéric Alauzet
- URL: https://www.rocq.inria.fr/gamma/Frederic.Alauzet/code_eng.html

3.19. Wolf-Interpol

KEYWORD: Scientific calculation

SCIENTIFIC DESCRIPTION

Software transferring scalar, vector and tensor fields from one mesh to another one.

FUNCTIONAL DESCRIPTION

Wolf-Interpol is a tool to transfer scalar, vector and tensor fields from a mesh to another one. Polynomial interpolation (from order 2 to 4) or conservative interpolation operators can be used. Wolf-Interpol also extract solutions along lines or surfaces.

- Participants: Frédéric Alauzet and Adrien Loseille
- Contact: Frédéric Alauzet
- URL: https://www.rocq.inria.fr/gamma/Frederic.Alauzet/code_eng.html

3.20. Wolf-MovMsh

KEYWORD: Scientific calculation

SCIENTIFIC DESCRIPTION

Moving mesh algorithm coupled with mesh-connectivity optimization.

FUNCTIONAL DESCRIPTION

Wolf-MovMsh is a moving mesh algorithm coupled with mesh-connectivity optimization. Mesh deformation is computed by means of a linear elasticity solver or a RBF interpolation. Smoothing and swapping mesh optimization are performed to maintain good mesh quality. It handles rigid or deformable bodies, and also rigid or deformable regions of the domain.

- Participants: Frédéric Alauzet and Adrien Loseille
- Contact: Frédéric Alauzet
- URL: https://www.rocq.inria.fr/gamma/Frederic.Alauzet/code_eng.html

3.21. Wolf-Nsc

KEYWORD: Scientific calculation

SCIENTIFIC DESCRIPTION

Numerical flow solver solving the compressible Navier-Stokes equations.

FUNCTIONAL DESCRIPTION

Wolf-Nsc is numerical flow solver solving steady or unsteady turbulent compressible Euler and Navier-Stokes equations. The available turbulent models are the Spalart-Almaras and the Menter SST k-omega. A mixed finite volume - finite element numerical method is used for the discretization. Second order spatial accuracy is reached thanks to MUSCL type methods. Explicit or implicit time integration are available. It also resolved dual (adjoint) problem and compute error estimate for mesh adaptation.

- Participants: Frédéric Alauzet and Adrien Loseille
- Contact: Frédéric Alauzet
- URL: https://www.rocq.inria.fr/gamma/Frederic.Alauzet/code_eng.html

3.22. Wolf-Shrimp

KEYWORD: Scientific calculation

SCIENTIFIC DESCRIPTION

Mesh partitioner for parallel mesh generation and parallel computation.

FUNCTIONAL DESCRIPTION

Wolf-Shrimp is a generic mesh partitioner for parallel mesh generation and parallel computation. It can partition planar, surface (manifold and non manifold), and volume domain. Several partitioning methods are available: Hilbert-based, BFS, BFS with restart. It can work with or without weight function and can correct the partitions to have only one connected component.

- Participants: Frédéric Alauzet and Adrien Loseille
- Contact: Frédéric Alauzet
- URL: https://www.rocq.inria.fr/gamma/Frederic.Alauzet/code_eng.html

3.23. Wolf-Spyder

KEYWORD: Scientific calculation

SCIENTIFIC DESCRIPTION

Metric-based mesh quality optimizer using vertex smoothing and edge/face swapping.

FUNCTIONAL DESCRIPTION

Wolf-Spyder is a metric-based mesh quality optimizer using vertex smoothing and edge/face swapping.

- Participants: Frédéric Alauzet and Adrien Loseille
- Contact: Frédéric Alauzet
- URL: https://www.rocq.inria.fr/gamma/Frederic.Alauzet/code_eng.html

3.24. Wolf-Xfem

KEYWORD: Scientific calculation

SCIENTIFIC DESCRIPTION

Tool providing the mesh of the intersection between a surface mesh and a volume mesh in the goal of simulating mechanical fractures.

FUNCTIONAL DESCRIPTION

Wolf-Xfem is a tool providing the mesh of the intersection between a surface mesh and a volume mesh.

- Participants: Frédéric Alauzet
- Contact: Frédéric Alauzet
- URL: https://www.rocq.inria.fr/gamma/Frederic.Alauzet/code_eng.html

GECO Project-Team

6. New Software and Platforms

6.1. ARTIV1 INPAINTING

ARTIV1 INPAINTING

FUNCTIONAL DESCRIPTION

ARTIV1 INPAINTING is a software for reconstruction of corrupted and damaged images. One of the main features of the algorithm on which the software is based is that it does not require any information about the location and character of the corrupted places. Another important advantage is that this method is massively parallelizable, this allows to work with sufficiently large images. Theoretical background of the presented method is based on the model of geometry of vision due to Petitot, Citti and Sarti. The main step is numerical solution of the equation of 3D hypoelliptic diffusion. A new version of the software has just be submitted for protection at APP (Agence pour la protection des programmes).

- Contact: Ugo Boscain

POEMS Project-Team

6. New Software and Platforms

6.1. COFFEE

FUNCTIONAL DESCRIPTION

COFFEE is a 3D solver for linear elastodynamics based on fast BEMs (full implementation in Fortran 90). The 3-D elastodynamic equations are solved with the boundary element method accelerated by the multi-level fast multipole method or H-matrix based solvers. The fundamental solutions for the infinite or half-space are used. A boundary element-boundary element coupling strategy is also implemented so multi-region problems (strata inside a valley for example) can be solved.

- Contact: Stéphanie Chaillat
- URL: <http://perso.ensta-paristech.fr/~chaillat/index.php?page=softwares>

6.2. XLiFE++

FUNCTIONAL DESCRIPTION

XLiFE++ is a Finite Element library written in C++ based on a variational approach and standard finite element methods, boundary element methods, spectral approximations. It allows to mix these different methods in a easy way to deal with complex models. A new version (v1.5) has been released in November 2016. This year, many bugs have been fixed and many improvements have been done. The main new features are: introduction of hierarchical matrix, new development for BEM computation (2D Helmholtz is now available), re-engineering of the automatic installation and compilation and connection to a Jenkins test platform. Two training days gathering thirty people have been organized in June 2016.

- Contact: Eric Lunéville and Nicolas Kielbasiewicz
- URL: <http://uma.ensta-paristech.fr/soft/XLiFE++/>

SELECT Project-Team

5. New Software and Platforms

5.1. BlockCluster

Block Clustering

KEYWORDS: Mixture model - Block cluster analysis

SCIENTIFIC DESCRIPTION

Blockcluster is software devoted to model-based block clustering. It is developed in partnership with the MODAL team (Inria Lille). This year, some major bugs have been fixed, and the Bayesian point of view has been reinforced by including Gibbs sampling for binary and categorical data. This Gibbs sampler, coupled with the variational Bayes algorithm, provides solutions which are more stable and less dependent on the initial values of the algorithm. An exact expression of the ICL criterion has also been provided. This non-asymptotic criterion appears to be more relevant than the BIC-like approximation of ICL.

FUNCTIONAL DESCRIPTION

BlockCluster is an R package for co-clustering of binary, contingency and continuous data based on mixture models.

- Participants: Gilles Celeux, Christine Keribin, Christophe Biernacki and Serge Iovleff
- Contact: Gilles Celeux
- URL: <http://cran.r-project.org/web/packages/blockcluster/index.html>

5.2. Mixmod

Multi-purpose software for model-based clustering and classification with continuous and categorical variables.

KEYWORDS: Mixture model - cluster analysis - discriminant analysis

FUNCTIONAL DESCRIPTION

MIXMOD is being developed in collaboration with Christophe Biernacki, Florent Langrogné (Université de Franche-Comté) and Gérard Govaert (Université de Technologie de Compiègne). MIXMOD (MIXture MODELing) software fits mixture models to a given data set, with either a clustering or a discriminant analysis purpose. MIXMOD uses a large variety of algorithms to estimate mixture parameters, e.g., EM, Classification EM, and Stochastic EM. They can be combined to create different strategies that lead to a sensible maximum of the likelihood (or completed likelihood) function. Moreover, different information criteria for choosing a parsimonious model, e.g. the number of mixture components, some of them favoring either a cluster analysis or a discriminant analysis point of view, are included. Many Gaussian models for continuous variables and multinomial models for discrete variable are included. Written in C++, MIXMOD is interfaced with MATLAB. The software, statistical documentation, and user guide are available here: <http://www.mixmod.org>.

Since 2010, MIXMOD has a proper graphical user interface. A version of MIXMOD in R is now available: <http://cran.r-project.org/web/packages/Rmixmod/index.html>.

Josselin Demont and Benjamin Auder have contributed to software improvement in MIXMOD. They have implemented an interface to test any mathematical library (Armadillo, Eigen, etc.) to replace NEWMAT. They have contributed to the continuous integration setup using Jenkins tools, and prepared an automated testing framework for unit and non-regression tests.

Jonas Renault, an engineer, is in charge of developing a web version of MIXMOD.

- Participants: Christophe Biernacki, Gilles Celeux, Gérard Govaert, Florent Langrogné and Benjamin Auder
- Partners: CNRS - HEUDIASYC - Laboratoire Paul Painlevé - LIFL - LMB - Université Lille 1
- Contact: Gilles Celeux
- URL: <http://www.mixmod.org>

5.3. MASSICCC

Massive Clustering with Cloud Computing

KEYWORDS: Statistic analysis - Big data - Machine learning - Web Application

SCIENTIFIC DESCRIPTION

The web application let users use several software packages developed by Inria directly in a web browser. Mixmod is a classification library for continuous and categorical data. MixtComp allows for missing data and a larger choice of data types developed by MODAL team (Inria Lille). BlockCluster is a library for co-clustering data. When using the web application, the user can first upload a data set, then configure a job using one of the libraries mentioned and start the execution of the job on a cluster. The results are then displayed directly in the browser allowing for rapid understanding and interactive visualisation.

FUNCTIONAL DESCRIPTION

The MASSICCC web application offers a simple and dynamic interface for analysing heterogeneous data with a web browser. Various software packages for statistical analysis are available (Mixmod, MixtComp, BlockCluster) which allow for supervised and supervised classification of large data sets.

- Participants: Christophe Biernacki, Gilles Celeux, Benjamin Auder, Josselein Demont, Jonas Renault
- Contact: Jonas Renault
- URL: <https://massiccc.lille.inria.fr>

TAO Project-Team

6. New Software and Platforms

6.1. CMA-ES

Covariance Matrix Adaptation Evolution Strategy

KEYWORDS: Numerical optimization - Black-box optimization - Stochastic optimization

SCIENTIFIC DESCRIPTION

The CMA-ES is considered as state-of-the-art in evolutionary computation and has been adopted as one of the standard tools for continuous optimisation in many (probably hundreds of) research labs and industrial environments around the world. The CMA-ES is typically applied to unconstrained or bounded constraint optimization problems, and search space dimensions between three and a hundred. The method should be applied, if derivative based methods, e.g. quasi-Newton BFGS or conjugate gradient, (supposedly) fail due to a rugged search landscape (e.g. discontinuities, sharp bends or ridges, noise, local optima, outliers). If second order derivative based methods are successful, they are usually faster than the CMA-ES: on purely convex-quadratic functions, $f(x)=x^T H x$, BFGS (Matlabs function `fminunc`) is typically faster by a factor of about ten (in terms of number of objective function evaluations needed to reach a target function value, assuming that gradients are not available). On the most simple quadratic function $f(x)=\|x\|^2=x^T x$ BFGS is faster by a factor of about 30.

FUNCTIONAL DESCRIPTION

The CMA-ES is an evolutionary algorithm for difficult non-linear non-convex black-box optimisation problems in continuous domain.

- Participants: Nikolaus Hansen and Emmanuel Benazera
- Contact: Nikolaus Hansen
- URL: <https://www.lri.fr/~hansen/cmaesintro.html>

6.2. COCO

COMparing Continuous Optimizers

KEYWORDS: Benchmarking - Numerical optimization - Black-box optimization - Stochastic optimization

SCIENTIFIC DESCRIPTION

COMparing Continuous Optimisers (COCO) [65] is a tool for benchmarking algorithms for black-box optimisation. COCO facilitates systematic experimentation in the field of continuous optimization. COCO provides: (1) an experimental framework for testing the algorithms, (2) post-processing facilities for generating publication quality figures and tables, (3) LaTeX templates of articles which present the figures and tables in a single document.

The COCO software is composed of two parts: (i) an interface available in different programming languages (C/C++, Java, Matlab/Octave, Python) which allows to run and log experiments on a suite of test functions. Several testbeds are provided. (ii) a Python tool for generating figures and tables that can be browsed in `html` or used in LaTeX templates.

FUNCTIONAL DESCRIPTION

The COCO platform provides the functionality to automatically benchmark optimization algorithms for bounded or unbounded, (yet) unconstrained optimization problems in continuous domains. Benchmarking is a vital part of algorithm engineering and a necessary path to recommend algorithms for practical applications. The COCO platform releases algorithm developers and practitioners alike from (re-)writing test functions, logging, and plotting facilities by providing an easy-to-handle interface in several programming languages. The COCO platform has been developed since 2007 and has been used extensively within the “Blackbox Optimization Benchmarking (BBOB)” workshop series since 2009. Overall, 140+ algorithms and algorithm variants by contributors from all over the world have been benchmarked with the platform so far and all data is publicly available for the research community. A new test suite of bi-objective problems [74] has been used for the BBOB-2016 workshop at GECCO.

- Participants: Dimo Brockhoff, Arnaud Liefoghe, Thanh-Do Tran, Nikolaus Hansen, Anne Auger, Marc Schoenauer, Ouassim Ait Elhara, Asma Atamna, Tea Tusar and Dejan Tusar
- Partners: Université technique de Dortmund - Université technique de Prague
- Contact: Dimo Brockhoff
- URL: <https://github.com/numbbo/coco>

6.3. Cartolabe

FUNCTIONAL DESCRIPTION

The goal of Cartolabe is to build a visual map representing the scientific activity of an institution/university/domain from published articles and reports. Using the HAL Database and building upon the AnHALytics processing chain, Cartolabe provides the user with a map of the thematics, authors and articles and their dynamics along time. ML techniques are used for dimensionality reduction, cluster and topics identification; visualisation techniques are used for a scalable 2D representation of the results.

- Participants: Felix Loustisserand, Philippe Caillou, Michèle Sebag, Jean-Daniel Fekete (AVIZ)
- Partners: AVIZ (Inria)
- Contact: Philippe Caillou
- URL: <https://cartolabe.lri.fr>

6.4. METIS

KEYWORDS: Optimization - Energy

FUNCTIONAL DESCRIPTION

Many works in Energy Optimization, in particular in the case of high-scale sequential decision making, are based on one software per application, because optimizing the software eventually implies losing generality. Our goal is to develop with Artelys a platform, METIS, which can be used for several applications. In 2012 we interfaced existing codes in Artelys and codes developed in the TAO team, experiments have been performed and test cases have been designed. A main further work is the introduction of generic tools for stochastic dynamic programming into the platform, for comparison and hybridization with other tools from the UCT-SIG.

- Participants: Olivier Teytaud, Jeremie Decock, Jean-Joseph Christophe, Vincent Berthier, Marie Liesse Cauwet and Sandra Cecilia Astete Morales
- Partner: Artelys
- Contact: Olivier Teytaud
- URL: <https://www.lri.fr/~teytaud/metis.html>

6.5. io.datascience

FUNCTIONAL DESCRIPTION

This Data as a Service (DaaS) platform is developed in the context of the Center for Data Science and the TIMCO project. Its overall goal is to exploit the advances in semantic web techniques for efficient sharing and usage of scientific data [41], [73]. A related specific software is the Tester for Triplestore (TFT) software suite, which benchmarks the compliance of sparql databases wrt the RDF standard and publishes the results through the SparqlScore service. The io.datascience platform has been selected for presentation at numerous venues, see section 10.3 for details.

- Contact: Cécile Germain
- URL: <https://io.datascience-paris-saclay.fr/>

6.6. CodaLab

KEYWORDS Benchmarking, competitions.

FUNCTIONAL DESCRIPTION

Challenges in machine learning and data science are competitions running over several weeks or months to resolve problems using provided datasets or simulated environments. Challenges can be thought of as crowdsourcing, benchmarking, and communication tools. They have been used for decades to test and compare competing solutions in machine learning in a fair and controlled way, to eliminate “inventor-evaluator” bias, and to stimulate the scientific community while promoting reproducible science.

Codalab Competitions (<http://competitions.codalab.org>) is a project that was started by Microsoft Research in 2013 in which Isabelle Guyon has taken an active part, to promote the use of challenges in Machine Learning and Data Science. The TAO team has been selected to take over the project under Isabelle Guyon’s leadership. The transfer has been successfully completed in the fall 2016. New features are being implemented, including developing a Wizard <http://staging.chalab.eu/>.

With already over 50 public competitions (including this year the Data Science Game, a student Olympiad co-organized by our PhD. student Benjamin Donnot <http://www.datasciencegame.com/>, the AutoML challenge <http://automl.chalearn.org/> [42] and a new contest in the LAP challenge series <http://chalearnlap.cvc.uab.es/> [47], co-organized by Isabelle Guyon), Codalab is taking momentum in medical imaging, computer vision, time series prediction, text mining, and other applications. TAO is going to continue expanding Codalab to accommodate new needs. For example, two competitions in preparation – TrackML competition (in High Energy Physics) [72] and the See.4C competition (spatio-temporal time series in collaboration with RTE) [48] – will require code submission, permitting to benchmark methods in a controlled environment. We are re-designing the backend of CodaLab to allow organizers to add more servers to satisfy on-the-fly demands of new competitions. Other features coming soon will be the possibility of interacting with a data generating model (rather than analyzing “canned” data), which enables the organization of reinforcement learning competitions and the possibility of organizing “coopetitions” (a mix of competition and collaboration). Other existing challenge platforms are too restrictive to simulate collaboration between participants and implement “coopetitions”. Our starting PhD. student Lisheng Sun designed and implemented a first prototype of coopetition “Beat AutoSKLearn”, which was run at the NIPS Challenges in Machine Learning workshop (CiML 2016 <http://ciml.chalearn.org/>).

- Contact: Isabelle Guyon
- URL: <http://competitions.codalab.org>

TROPICAL Team

6. New Software and Platforms

6.1. New Software

6.1.1. Coq-Polyhedra

Coq-Polyhedra is a library which aims at formalizing convex polyhedra in Coq. A description of the associated contributions can be found in Section 7.3.1 . Coq-Polyhedra is distributed under the CeCILL-B licence, and can be found at <https://github.com/nhojem/Coq-Polyhedra>.

AMIB Project-Team

4. New Software and Platforms

4.1. GenRGenS

GENeration of Random GENomic Sequences

KEYWORDS: Bioinformatics - Genomic sequence

FUNCTIONAL DESCRIPTION

A software dedicated to the random generation of sequences. Supports different classes of models, including weighted context-free grammars, Markov models, ProSITE patterns..

- Participants: Yann Ponty and Alain Denise
- Contact: Yann Ponty
- URL: <https://www.lri.fr/~genrgens/>

4.2. VARNA

Interactive drawing and editing of the RNA secondary structure

KEYWORDS: Bioinformatics - Structural Biology

SCIENTIFIC DESCRIPTION

VARNA is Java lightweight Applet dedicated to drawing the secondary structure of RNA. It is also a Swing component that can be very easily included in an existing Java code working with RNA secondary structure to provide a fast and interactive visualization.

Being free of fancy external library dependency and/or network access, the VARNA Applet can be used as a base for a standalone applet. It looks reasonably good and scales up or down nicely to adapt to the space available on a web page, thanks to the anti-aliasing drawing primitives of Swing.

FUNCTIONAL DESCRIPTION

Varna is a new tool for the automated drawing, visualization and annotation of the secondary structure of RNA, designed as a companion software for web servers and databases.

Varna implements four drawing algorithms, supports input/output using the classic formats dbn, ct, bpseq and RNAML and exports the drawing as five picture formats, either pixel-based (JPEG, PNG) or vector-based (SVG, EPS and XFIG).

It also allows manual modification and structural annotation of the resulting drawing using either an interactive point and click approach, within a web server or through command-line arguments.

- Participants: Alain Denise and Yann Ponty
- Partners: CNRS - Ecole Polytechnique - Université Paris-Sud
- Contact: Yann Ponty
- URL: <http://varna.lri.fr/>

GALEN Project-Team

6. New Software and Platforms

6.1. DISD

Dense Image and Surface Descriptors

FUNCTIONAL DESCRIPTION Scale-Invariant Descriptor, Scale-Invariant Heat Kernel Signatures DISD implements the SID, SI-HKS and ISC descriptors. SID (Scale-Invariant Descriptor) is a densely computable, scale- and rotation- invariant descriptor. We use a log-polar grid around every point to turn rotation/scalings into translation, and then use the Fourier Transform Modulus (FTM) to achieve invariance. SI-HKS (Scale-Invariant Heat Kernel Signatures) extract scale-invariant shape signatures by exploiting the fact that surface scaling amounts to multiplication and scaling of a properly sampled HKS descriptor. We apply the FTM trick on HKS to achieve invariance to scale changes. ISC (Intrinsic Shape Context) constructs a net-like grid around every surface point by shooting outwards and tracking geodesics. This allows us to build a meta-descriptor on top of HKS/SI-HKS that takes neighborhood into account, while being invariant to surface isometries.

- Participants: Iasonas Kokkinos and Eduard Trulls
- Contact: Iasonas Kokkinos
- URL: <http://vision.mas.ecp.fr/Personnel/iasonas/descriptors.html>

6.2. DPMS

FUNCTIONAL DESCRIPTION DPMS implements branch-and-bound object detection, cutting down the complexity of detection from linear in the number of pixels to logarithmic.

- Participant: Iasonas Kokkinos
- Contact: Iasonas Kokkinos
- URL: <http://cvn.ecp.fr/personnel/iasonas/dpms.html>

6.3. ECP

Part-Based Object Detection

FUNCTIONAL DESCRIPTION A DPM model gives rise to the energy function being optimized during inference and has to be learned offline beforehand. All functionality is accessible via a ROS interface. The work follows closely Felzenszwalb's "Object Detection with Discriminatively Trained Part Based Models", using the FFLD-library in the implementation and facilitating communication in a setup with NAO robots.

- Participants: Haithem Boussaid, Stefan Kinauer, Iasonas Kokkinos
- Contact: Stefan Kinauer
- URL: <https://bitbucket.org/eu-reconfig/ecp>

6.4. DROP

KEYWORDS: Health - Merging - Registration of 2D and 3D multimodal images - Medical imaging

FUNCTIONAL DESCRIPTION Drop is a software programme that registers images originating from one or more modes by quickly and efficiently calculating a non-rigid / deformable field of deformation. Drop is a new, quick and effective registration tool based on new algorithms that do not require a cost function derivative.

- Partner: Centrale Paris
- Contact: Nikos Paragios
- URL: <http://campar.in.tum.de/Main/Drop>

6.5. FastPD

KEYWORD: Medical imaging

FUNCTIONAL DESCRIPTION FastPD is an optimization platform in C++ for the computer vision and medical imaging community.

- Contact: Nikolaos Paragyios
- URL: <http://www.csd.uoc.gr/~komod/FastPD/>

6.6. GraPeS

Grammar Parser for Shapes

FUNCTIONAL DESCRIPTION It is a software for parsing facade images using shape grammars. Grapes implement a parsing methods based on Reinforcement Learning principles. It optimizes simultaneously the topology of the parse tree as well as the associated parameters. GraPeS comes along with predefined shape grammars as XML files and defines three kinds of rewards. However, it also offers the possibility to create new grammars and to provide custom rewards in text files, widening the scope of potential applications. The name of the software comes from the aspect of the parse tree of the binary split grammars involved in the process.

- Participant: Iasonas Kokkinos
- Contact: Iasonas Kokkinos
- URL: <http://vision.mas.ecp.fr/Personnel/teboul/grapesPage/index.php>

6.7. HOAP-SVM

High-Order Average Precision SVM

SCIENTIFIC DESCRIPTION

We consider the problem of using high-order information (for example, persons in the same image tend to perform the same action) to improve the accuracy of ranking (specifically, average precision). We develop two learning frameworks. The high-order binary SVM (HOB-SVM) optimizes a convex upper bound of the surrogate 0-1 loss function. The high-order average precision SVM (HOAP-SVM) optimizes a difference-of-convex upper bound on the average precision loss function. Authors of the research paper: Puneet K. Dokania, A. Behl, C. V. Jawahar and M. Pawan Kumar

FUNCTIONAL DESCRIPTION The software provides a convenient API for learning to rank with high-order information. The samples are ranked according to a score that is proportional to the difference of max-marginals of the positive and the negative class. The parameters of the score function are computed by minimizing an upper bound on the average precision loss. The software also provides an instantiation of the API for ranking samples according to their relevance to an action, using the poselet features. The following learning algorithms are included in the API:

(1) Multiclass-SVM (2) AP-SVM (3) High Order Binary SVM (HOB-SVM) (4) High Order AP-SVM (HOAP-SVM) (5) M4 Learning (unpublished work)

The API is developed in C/C++ by Puneet K. Dokania.

- Participants: Puneet Dokania and Pawan Kumar
- Contact: Puneet Dokania
- URL: <http://puneetkdokania.github.io/projects/ranking-highorder/ranking-highorder.html>

6.8. LBSD

Learning-Based Symmetry Detection

FUNCTIONAL DESCRIPTION LBSD implements the learning-based approach to symmetry detection. It includes the code for running a detector, alongside with the ground-truth symmetry annotations that we have introduced for the Berkeley Segmentation Dataset (BSD) benchmark.

- Participant: Stavros Tsogkas
- Contact: Stavros Tsogkas
- URL: https://github.com/tsogkas/oid_1.0

6.9. TeXMeG

FUNCTIONAL DESCRIPTION Texture, modulation, generative models, segmentation, TeXMeG is a front-end for texture analysis and edge detection platform in Matlab that relies on Gabor filtering and image demodulation. Includes frequency- and time- based definition of Gabor- and other Quadrature-pair filterbanks, demodulation with the Regularized Energy Separation Algorithm and Texture/Edge/Smooth classification based on MDL criterion.

- Participant: Iasonas Kokkinos
- Contact: Iasonas Kokkinos
- URL: <http://cvsp.cs.ntua.gr/software/texture/>

6.10. mrf-registration

KEYWORDS: Health - Medical imaging

FUNCTIONAL DESCRIPTION Deformable image and volume registration, is a deformable registration platform in C++ for the medical imaging community. This is the first publicly available platform which contains most of the existing metrics to perform registration under the same concept. The platform is used for clinical research from approximately 3,000 users worldwide.

- Participant: Nikos Paragios
- Contact: Nikos Paragios
- URL: <http://www.mrf-registration.net/>

6.11. Newton-MRF

FUNCTIONAL DESCRIPTION MAP inference in MRFs can be performed through the LP relaxation approach. This project was a study of the feasibility and benefit of Newton-type methods for solving the optimization problem that is obtained by smoothing the dual of the LP relaxation. The project TRN-MRF is a trust-region Newton method that can address inference in higher order MRFs, for cases in which decomposition according to individual cliques leads to practical convergence. The project QN-MRF works for problems that need decomposition according to larger sub-problems (like chains of higher order cliques) and it works as long as a node is shared by exactly two sub-problems.

- Participants: Hariprasad Kannan, Nikos Paragios, Nikos Komodakis
- Contact: Hariprasad Kannan
- URL: <https://github.com/neostrider/TRN-MRF>, <https://github.com/neostrider/QN-MRF>

6.12. Relative MMD

FUNCTIONAL DESCRIPTION This software can be used to compare two distributions to a reference distribution. Applications include model selection and exploratory data analysis.

- Participants: Eugene Belilovsky, Wacha Bounliphone, Matthew Blaschko (in collaboration with researchers at UCL and Deepmind)
- Contact: Eugene Belilovsky
- URL: <https://github.com/eugenium/MMD>

6.13. Deep Graph Structure Discovery

FUNCTIONAL DESCRIPTION Novel approach to graph structure discovery using neural network. This software provides a much faster approach to discover underlying conditional independence structure in small sample data.

- Participants: Eugene Belilovsky
- Contact: Eugene Belilovsky
- URL: <https://github.com/eugenium/LearnGraphDiscovery>

LIFEWARE Project-Team

6. New Software and Platforms

6.1. BIOCHAM

The Biochemical Abstract Machine

KEYWORDS: Systems Biology - Bioinformatics

FUNCTIONAL DESCRIPTION

The Biochemical Abstract Machine (BIOCHAM) is a software environment for modeling and analyzing biochemical reaction systems, performing static analyses, making simulations, specifying behaviors in temporal logic and searching parameter values in high dimension.

This year BIOCHAM has been completely rewritten with a modular architecture. The new version v4.0 will be released soon with new features for synthesizing biochemical reaction systems from input/output function specifications.

- Participants: François Fages, Guillaume Le Guludec, Thierry Martinez Sylvain Soliman
- Contact: François Fages
- URL: <http://lifeware.inria.fr/biocham/>

6.2. CellStar

KEYWORDS: Systems biology - Bioinformatics

FUNCTIONAL DESCRIPTION

In close collaboration with Kirill Batmanov, Cédric Lhoussaine and Cristian Versari (LIFL, CNRS/Lille Univ), with Szymon Stoma (Inria; now ETHZ), and with Pascal Hersen (MSC, CNRS/Paris7), we developed CellStar, a tool-chain for image processing and analysis dedicated to segmentation and tracking of yeast cells in brightfield time-lapse microscopy movies. To estimate algorithm quality we developed a benchmark made of manually-verified images illustrating various situations. On this benchmark, CellStar outperformed 5 other state-of-the-art tools. The tool-chain is implemented in Matlab and is provided together with the Python Yeast Image Toolkit benchmark tool.

- Participants: Pascal Hersen, Grégory Batt, Artémis Llamosi and Szymon Stoma
- Contact: Grégory Batt
- URL: <http://cellstar-algorithm.org/>

6.3. CLP2Zinc

KEYWORDS: Modeling language - Constraint programming - Search

FUNCTIONAL DESCRIPTION

CLP2Zinc is a rule-based modeling language for constraint programming. It extends the MiniZinc modeling language with Horn clauses which can be used to express search strategies as constraints in the model. This system was developed in the framework of the ANR Net-WMS-2 project and is a follow-up of the Rules2CP modeling language.

- Participants: Thierry Martinez, François Fages and Sylvain Soliman
- Contact: Thierry Martinez
- URL: <http://lifeware.inria.fr/~tmartine/clp2zinc/>

M3DISIM Project-Team

6. New Software and Platforms

6.1. FELiScE-branch HappyHeart

Finite Elements for Life SCiences and Engineering problems

KEYWORDS: Finite element modelling - Cardiac Electrophysiology - Cardiovascular and respiratory systems

SCIENTIFIC DESCRIPTION

FELISCE – standing for “Finite Elements for LIfe SCiences and Engineering” – is a new finite element code. One specific objective of this code is to provide in a unified software environment all the state-of-the-art tools needed to perform simulations of the complex cardiovascular models considered in the teams M3DISIM and REO – namely, involving fluid and solid mechanics, electrophysiology, and the various associated coupling phenomena.

FUNCTIONAL DESCRIPTION

In FELISCE we have prepared a branch called HappyHeart, which aims at providing a user-friendly interface able to deal efficiently with complex cardiovascular simulations. Started in 2013, the code is already quite large (about 55,000 lines of code in almost 700 different files) and its core is about to be complete. It includes among others full HPC functionalities, high-order finite elements, physics coupling and topology capabilities. Our purpose will then be to use the library to implement the sophisticated cardiovascular models of the team and couple them with Verdandi (data assimilation library) to provide patient-specific simulations.

- Participants: Gautier Bureau, Federica Caforio, Dominique Chapelle, Sébastien Gilles, Sébastien Imperiale, Philippe Moireau,
- Contact: Sébastien Gilles
- URL: <http://felisce.gforge.inria.fr>

6.2. HeartLab

KEYWORDS: Simulation - Health - Cardiac - Image analysis - Computational geometry

SCIENTIFIC DESCRIPTION

The heartLab software is a library designed to perform both simulation and estimation of the heart mechanical behavior (based on various types of measurements, e.g. images).

FUNCTIONAL DESCRIPTION

The heartLab software is a library designed to perform both simulation and estimation of the heart mechanical behavior (based on various types of measurements, e.g. images).

Also included are geometric data and tools in the code to define cardiac anatomical models compatible with the simulation requirements in terms of mesh quality, fiber direction data defined within each element, and the referencing necessary for handling boundary conditions and estimation, in particular. These geometries are analytical or come from computerized tomography (CT) or magnetic resonance (MR) image data of humans or animals.

- Participants: Gautier Bureau, Radomir Chabiniok, Dominique Chapelle and Philippe Moireau
- Contact: Philippe Moireau
- URL: <https://raweb.inria.fr/rapportsactivite/RA2013/m3disim/uid14.html>

6.3. Verdandi

KEYWORDS: HPC - Model - Software Components - Partial differential equation

FUNCTIONAL DESCRIPTION

Verdandi is a free and open-source (LGPL) library for data assimilation. It includes various such methods for coupling one or several numerical models and observational data. Mainly targeted at large systems arising from the discretization of partial differential equations, the library is devised as generic, which allows for applications in a wide range of problems (biology and medicine, environment, image processing, etc.). Verdandi also includes tools to ease the application of data assimilation, in particular in the management of observations or for a priori uncertainty quantification. Implemented in C++, the library may be used with models implemented in Fortran, C, C++ or Python.

- Participants: Gautier Bureau, Dominique Chapelle, Philippe Moireau
- Contact: Philippe Moireau
- URL: <http://verdandi.gforge.inria.fr/>

PARIETAL Project-Team

5. New Software and Platforms

5.1. Mayavi

FUNCTIONAL DESCRIPTION

Mayavi is the most used scientific 3D visualization Python software. Mayavi can be used as a visualization tool, through interactive command line or as a library. It is distributed under Linux through Ubuntu, Debian, Fedora and Mandriva, as well as in PythonXY and EPD Python scientific distributions. Mayavi is used by several software platforms, such as PDE solvers (fipy, sfepy), molecule visualization tools and brain connectivity analysis tools (connectomeViewer).

- Contact: Gaël Varoquaux
- URL: <http://mayavi.sourceforge.net/>

5.2. Nilearn

NeuroImaging with scikit learn

KEYWORDS: Health - Neuroimaging - Medical imaging

FUNCTIONAL DESCRIPTION

NiLearn is the neuroimaging library that adapts the concepts and tools of scikit-learn to neuroimaging problems. As a pure Python library, it depends on scikit-learn and nibabel, the main Python library for neuroimaging I/O. It is an open-source project, available under BSD license. The two key components of NiLearn are i) the analysis of functional connectivity (spatial decompositions and covariance learning) and ii) the most common tools for multivariate pattern analysis. A great deal of efforts has been put on the efficiency of the procedures both in terms of memory cost and computation time.

- Participants: Gaël Varoquaux, Bertrand Thirion, Loïc Estève, Alexandre Abraham, Michael Eickenberg, Alexandre Gramfort, Fabian Pedregosa Izquierdo, Elvis Dohmatob and Virgile Fritsch
- Contact: Bertrand Thirion
- URL: <http://nilearn.github.io/>

5.3. PyHRF

KEYWORDS: fMRI - Statistic analysis - Neurosciences - IRM - Brain - Health - Medical imaging

FUNCTIONAL DESCRIPTION

As part of fMRI data analysis, PyHRF provides a set of tools for addressing the two main issues involved in intra-subject fMRI data analysis : (i) the localization of cerebral regions that elicit evoked activity and (ii) the estimation of the activation dynamics also referenced to as the recovery of the Hemodynamic Response Function (HRF). To tackle these two problems, PyHRF implements the Joint Detection-Estimation framework (JDE) which recovers parcel-level HRFs and embeds an adaptive spatio-temporal regularization scheme of activation maps.

- Participants: Thomas Vincent, Solveig Badillo, Lotfi Chaari, Christine Bakhous, Florence Forbes, Philippe Ciuciu, Laurent Risser, Thomas Perret and Aina Frau Pascual
- Partners: CEA - NeuroSpin
- Contact: Florence Forbes
- URL: <http://pyhrf.org>

5.4. Scikit-learn

KEYWORDS: Classification - Learning - Clustering - Regression - Medical imaging

SCIENTIFIC DESCRIPTION

Scikit-learn is a Python module integrating classic machine learning algorithms in the tightly-knit scientific Python world. It aims to provide simple and efficient solutions to learning problems, accessible to everybody and reusable in various contexts: machine-learning as a versatile tool for science and engineering.

FUNCTIONAL DESCRIPTION

Scikit-learn can be used as a middleware for prediction tasks. For example, many web startups adapt Scikitlearn to predict buying behavior of users, provide product recommendations, detect trends or abusive behavior (fraud, spam). Scikit-learn is used to extract the structure of complex data (text, images) and classify such data with techniques relevant to the state of the art.

Easy to use, efficient and accessible to non datascience experts, Scikit-learn is an increasingly popular machine learning library in Python. In a data exploration step, the user can enter a few lines on an interactive (but non-graphical) interface and immediately sees the results of his request. Scikitlearn is a prediction engine . Scikit-learn is developed in open source, and available under the BSD license.

- Participants: Olivier Grisel, Gaël Varoquaux, Bertrand Thirion, Michael Eickenberg, Loïc Estève, Alexandre Gramfort, Arthur Mensch
- Partners: CEA - Logilab - Nuxeo - Saint Gobain - Telecom Paris - Tinyclues
- Contact: Olivier Grisel
- URL: <http://scikit-learn.org>

XPOP Team

6. New Software and Platforms

6.1. mlxR

A R package for the simulation and visualization of longitudinal data. The models are encoded using the model coding language 'Mlxtran', automatically converted into C++ codes, compiled on the fly and linked to R using the 'Rcpp' package. That allows one to implement very easily complex ODE-based models and complex statistical models, including mixed effects models, for continuous, count, categorical, and time-to-event data.

6.2. FactoMineR

A R package dedicated to principal component methods (PCA, Correspondence Analysis for contingency tables, Multiple Correspondence Analysis for categorical data, MFA for multi-blocks data). Google users group and you-tube videos available.

6.3. missMDA

A R package to perform principal component methods (PCA, MCA, MFA) with missing values and to impute continuous, categorical and mixed data. Multiple imputation is available.

6.4. denoiseR

A R package that approximates a low-rank matrix from noisy data (Gaussian and Poisson Noise). Singular values shrinkage methods are implemented.

INFINE Project-Team

5. New Software and Platforms

5.1. RIOT

KEYWORDS: Internet of things - Operating system - Sensors - Iot - Wireless Sensor Networks - Internet protocols

SCIENTIFIC DESCRIPTION

While requiring as low as 1,5kB of RAM and 5kB of ROM, RIOT offers real time and energy efficiency capabilities, as well as a powerful API (partially POSIX compliant) that is consistent across heterogeneous low-end IoT hardware (8-bit, 16-bit and 32-bit architectures). This API is developer-friendly in that it enables multi-threading, standard C and C++ application programming (as well as scripting) and the use of standard debugging tools – all of which was not possible so far for such embedded programming. On top of this, RIOT supports a large number of software libraries (e.g. crypto, maths, drivers...) and aggregates in a simple manner a wide variety of third-party open source software packages. In particular, various network stacks are available with RIOT, such as a standard IPv6/6LoWPAN stack and an information-centric network stack (based on CCN).

FUNCTIONAL DESCRIPTION

RIOT is an Open Source operating system that provides standard protocols for embedded systems. RIOT allows, for example, the development of applications that collect sensor data and transmit it to a central node (e.g. a server). This data can then be used for smart energy management for instance. Other use-cases include also IoT-enabled low-cost robots.

RIOT is specially designed for embedded systems, which are strongly constrained in memory and energy. Further, RIOT can easily be ported to different hardware devices and follows the latest evolution of IP standards.

RIOT applications can readily be tested in the FIT IoT-Lab, which provides a large-scale infrastructure facility with 3000 nodes for testing remotely small wireless devices.

- Participants: Emmanuel Baccelli, Oliver Hahm, Cedric Adjih, Francisco Acosta
- Partner: Freie Universität Berlin
- Contact: Emmanuel Baccelli
- URL: <https://github.com/RIOT-OS/RIOT>

5.2. MACACO

Mobile context-Adaptive CAching for COntent-centric networking

FUNCTIONAL DESCRIPTION

MACACOapp is developed in the context of the EU CHIST-ERA MACACO project. It consists in a mobile phone application that periodically samples phone's information on the mobility (through, e.g., GPS sensor, accelerometer and WiFi/Bluetooth/Cellular environment, connectivity type) and on the data traffic it generates (through, e.g., Internet browser history and applications data consumption). The information collected will be time-stamped and will be periodically sent to the central servers for analysis and visualization. We expect that (1) the collected information will allow us studying the correlation between mobility and content demand patterns and that (2) the results of this analysis will allow us inferring the best times and places to transfer content from/to users' phones location and/or from/to the wireless infrastructure closest to the users' phones location. Users will be also invited to fill a non-mandatory questionnaire relevant to this study. Our questionnaire collects information about the personality traits and application preferences of people. We expect that the information collected from questionnaire will allow us to analyse the correlation between users personality traits and their application preferences and interests. User's application preferences and interests will be inferred from the Internet browsing history and running app information obtained from the MACACO App.

- Participants: Aline Carneiro Viana, Katia Jaffres and Marco Fiore
- Contact: Aline Carneiro Viana
- URL: <https://macaco.inria.fr/macacoapp/>

5.3. GardiNet (previously DragonNet)

FUNCTIONAL DESCRIPTION

GardiNet (previously known as DragonNet) is a generic framework for network coding in wireless networks. It is initially a result of the GETRF project of the Hipercom2 team.

It is based on intra-flow coding where the source divides the flow in a sequence of payloads of equal size (padding may be used). The design keys of DragonNet are simplicity and universality, GardiNet does not use explicit or implicit knowledge about the topology (such as the direction or distance to the source, the loss rate of the links, ...). Hence, it is perfectly suited to the most dynamic wireless networks. The protocol is distributed and requires minimal coordination. DragonNet architecture is modular, it is based on 5 building blocks (LIB, SIG, Protocol, SEW and DRAGON). Each block is almost independent. This makes DragonNet generic and hence adaptable to many application scenarios. DragonNet derives from a prior protocol called DRAGONCAST. Indeed, DragonNet shares the same principles and theoretical overview of DRAGONCAST. It enriches DRAGONCAST by the information base and signaling required to perform broadcast in wireless networks and in wireless sensor networks in particular.

- Participants: Cedric Adjih, Ichrak Amdouni, Hana Baccouch and Antonia Masucci
- Contact: Cedric Adjih
- URL: <http://getrf.gforge.inria.fr/https://github.com/GardiNet/gardinet>

AVIZ Project-Team

6. New Software and Platforms

6.1. Zooids

Participants: Mathieu Le Goc [correspondant], Lawrence Kim, Ali Parsaei, Jean-Daniel Fekete, Pierre Dragicevic, Sean Follmer.

Zooids are autonomous robots that handle both display and interaction. We distribute them as an open-source open-hardware platform for developing tabletop swarm interfaces [24]. All information, related content and material can be found at <http://www.aviz.fr/swarmui>.



Figure 3. Zooids can be held as tokens, manipulated collectively or individually, behave as physical pixels, act as handles and controllers, and can move dynamically under machine control. They are building blocks for a new class of user interface we call swarm user interfaces.

6.2. Reorder.js

Participant: Jean-Daniel Fekete [correspondant].

Visualizing data tables and graph/network can be done using a matrix visualization. Jacques Bertin, the French cartographer and visualization pioneer explained in his book "Semiology of Graphics" that, to make sense of a matrix, it should first be correctly ordered. This is what the `Reorder.js` library is doing.

Ordering is also useful for other purposes. For example, if you want to visualize with Parallel Coordinates, you should provide an order for the dimension axes. `Reorder.js` can be used to find a suitable order. See also the poster paper [48].

The library also provide examples of visualizations using reordering; they are based on the `d3.js` library. For more information, see our survey of methods for matrix reordering [3].

6.3. NetworkCube

Participants: Jean-Daniel Fekete [correspondant], Nathalie Henry-Riche, Benjamin Bach.

Network visualizations support research in a range of scientific domains from biology to humanities. NetworkCube is a platform to bridge the gap between domain scientists and visualisation researchers; NetworkCube aims in being a fast way to deploy experimental visualizations from research to domain experts analyzing dynamic networks. In turn, InfoVis researchers benefit from studying how their visualizations are used in the wild [45].

NetworkCube is made of three parts: a core, the Vistorian which is specialized for visualizations for historians, and the Connectoscope which is specialized for Brain Researchers. NetworkCube provides multiple representations for dynamic networks, allowing complex explorations from Web clients.

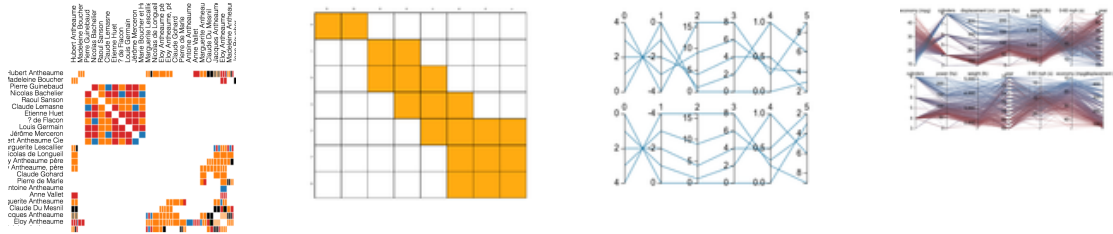


Figure 4. Correctly ordered matrices of a network (left), and parallel coordinate plots with dimensions ordered according to their correlation (right)

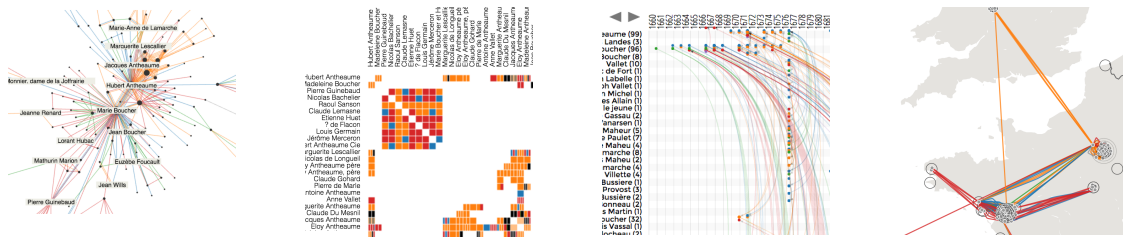


Figure 5. Four different visualization techniques to explore dynamic networks provided by NetworkCube

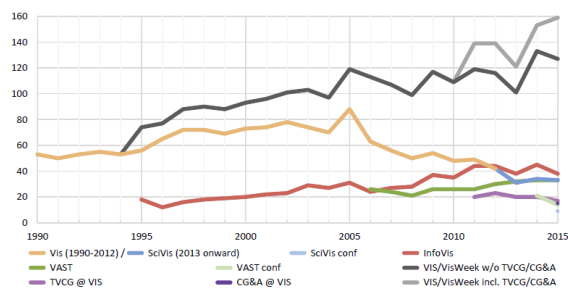


Figure 6. Overview of the files included in the dataset.

6.4. Vispubdata

Participants: Petra Isenberg [correspondant], Florian Heimerl, Steffen Koch, Tobias Isenberg, Panpan Xu, Charles Stolper, Michael Sedlmair, Torsten Möller, John Stasko.

We have created and made available to all a dataset with information about every paper that has appeared at the IEEE Visualization (VIS) set of conferences: InfoVis, SciVis, VAST, and Vis. The information about each paper includes its title, abstract, authors, and citations to other papers in the conference series, among many other attributes. This data is meant to be useful to the broad data visualization community to help understand the evolution of the field and as an example document collection for text data visualization research.

6.5. Time Curves

Participants: Benjamin Bach, Pierre Dragicevic [correspondant], Conglei Shi, Nicolas Heulot.



Figure 7. Wikipedia article on abortion illustrated with time curves.

We introduced *time curves* as a general approach for visualizing patterns of evolution in temporal data [2]. Examples of such patterns include slow and regular progressions, large sudden changes, and reversals to previous states. These patterns can be of interest in a range of domains, such as collaborative document editing, dynamic network analysis, and video analysis. Time curves employ the metaphor of folding a timeline visualization into itself so as to bring similar time points close to each other. This metaphor can be applied to any dataset where a similarity metric between temporal snapshots can be defined, thus it is largely datatype-agnostic. In our paper and on the online Website, we illustrate how time curves can visually reveal informative patterns in a range of different datasets.

More on the project Web page: www.aviz.fr/bbach/timecurves.

6.6. CENDARI Note-Taking-Environment

SCIENTIFIC DESCRIPTION

CENDARI (<http://www.aviz.fr/Research/CENDARI>) Is a European Infrastructure project funded by the EU for 4 years: 2012-2016. Aviz is in charge of the Human-Computer Interface for the project, and develops a tool to allow historians and archivists to take notes, enter them online, manage their images in relations with the notes and documents, and visualize the entities they find in the documents and notes. This system is an extension of the original EditorsNotes project, integrating several innovative components asked by the historians: visualizations, relations with the Semantic Web, and a management of access rights respecting the researchers' desire of privacy for their notes, as well as desire of sharing entities and relations gathered through the notes and documents.

FUNCTIONAL DESCRIPTION

Editors' Notes is an open-source, web-based tool for recording, organizing, preserving, and opening access to research notes, built with the needs of documentary editing projects, archives, and library special collections in mind.

- Participants: Evanthia Dimara, Nadia Boukhelifa Sari Ali and Jean-Daniel Fekete
- Contact: Jean-Daniel Fekete
- URL: <https://github.com/CENDARI/editorsnotes>

6.7. Hybrid Image Visualisation

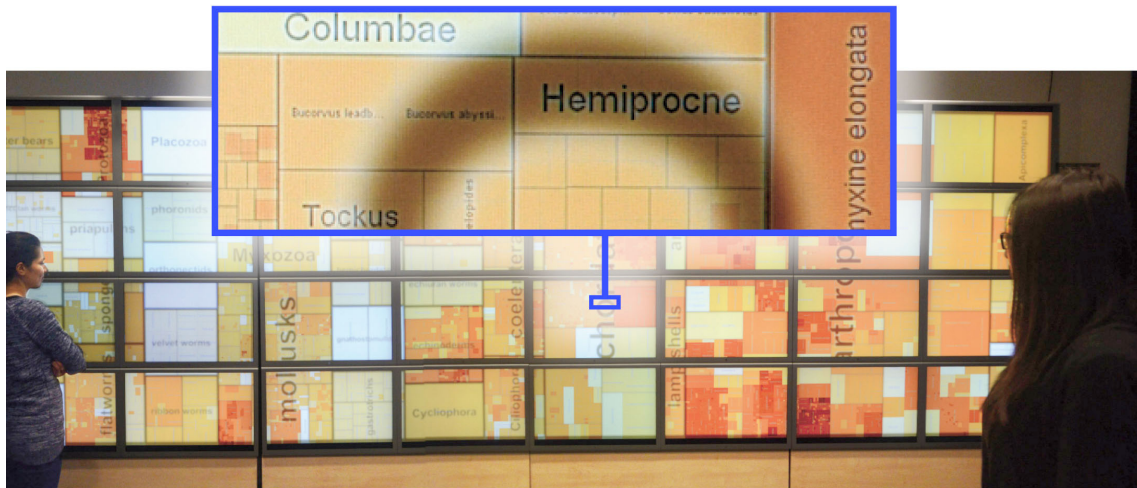


Figure 8. Hybrid image visualization software for the creation of visualizations for distant and close viewing on large displays.

Hybrid-image visualizations blend two different visual representations into a single static view, such that each representation can be perceived at a different viewing distance. Our work is motivated by data analysis scenarios that incorporate one or more displays with sufficiently large size and resolution to be comfortably viewed by different people from various distances. Hybrid-image visualizations can be used, in particular, to enhance overview tasks from a distance and detail-in-context tasks when standing close to the display. By taking advantage of humans' perceptual capabilities, hybrid-image visualizations do not require tracking of viewers in front of a display. Moreover, because hybrid-images use a perception-based blending approach, visualizations intended for different distances can each utilize the entire display. We contribute a design space, discuss the perceptual rationale for our work, provide examples and a set of techniques for hybrid-image visualizations, and describe tools for designing hybrid-image visualizations. An example can be found in Figure 8 .

KEYWORDS: Wall-Sized Displays, Perception, Hybrid Images

FUNCTIONAL DESCRIPTION

- Participants: Jean-Daniel Fekete, Petra Isenberg, Pierre Dragicevic, Wesley Willett, Romain Primet.
- Contact: Petra Isenberg
- URL: <http://aviz.fr/Research/HybridImageVisualizations>

6.8. Sparklificator

KEYWORDS: Information visualization - Data visualization - Visualization

SCIENTIFIC DESCRIPTION

Sparklificator is a general open-source jQuery library that eases the process of integrating word-scale visualizations into HTML documents.

FUNCTIONAL DESCRIPTION

Sparklicator's name comes from adding sparklines to a textual document. It is a general open-source jQuery library that eases the process of integrating word-scale visualizations into HTML documents. Sparklicator provides a range of options for adjusting the position (on top, to the right, as an overlay), size, and spacing of visualisations within the text. The library includes default visualizations, including small line charts and bar charts, and can also be used to integrate custom word-scale visualizations created using webbased visualization toolkits such as D3.

- Participants: Pascal Goffin, Wesley Willett and Petra Isenberg
- Contact: Jean-Daniel Fekete
- URL: <http://inria.github.io/sparklicator/>

CEDAR Team

6. New Software and Platforms

6.1. New Software

6.1.1. *CliqueSquare*

CliqueSquare allows storing and querying very large volumes of RDF data in a massively parallel fashion in a Hadoop cluster. The system uses its own partitioning and storage model for the RDF triples in the cluster.

CliqueSquare evaluates queries expressed in a dialect of the SPARQL query language. It is particularly efficient when processing complex queries, because it is capable of translating them into MapReduce programs guaranteed to have the minimum number of successive jobs. Given the high overhead of a MapReduce job, this advantage is considerable.

6.1.2. *Compact*

Compact reformulates conjunctive queries in the setting of ontology-based query answering. It takes as input a conjunctive query and an ontology, and outputs a first-order rewriting of that query whenever it exists (without termination guarantee when it does not exist). To ease its use and dissemination, a novel version has been implemented by M. Thomazo based on the framework GRAAL, developed within the Inria Sophia-Antipolis team GraphIK by C. Sipieter, an engineer funded by an ADT. It will in particular ease the integration with Semantic Web standards, as well as the use of query optimization techniques developed within Cedar for RDFS and DL-Lite_R to more general ontology languages.

6.1.3. *RDF-Commons*

RDF-Commons is a set of modules providing the abilities to *i*) load and store RDF data in a DBMS *ii*) parse RDF conjunctive queries *iii*) encode URIs and literals into integers *iv*) encode RDF conjunctive queries *v*) build statistics on RDF data *vi*) estimate the cost of the evaluation of a conjunctive query *vii*) saturate the RDF data, with respect to an RDF Schema *viii*) reformulate a conjunctive query with respect to an RDF Schema (ix) propose algebraic plans.

The algebraic plan part has been developed by A. Solimando and D. Bursztyn. An ADT funding for two years has been granted to consolidate and extend the development of RDF-Commons. The hiring process is ongoing.

6.1.4. *RDFSummary*

RDF Summary is a standalone Java software capable of building summaries of RDF graphs. Summaries are compact graphs (typically several orders of magnitude smaller than the original graph), which can be used to get acquainted quickly with a given graph, they can also be used to perform static query analysis, infer certain things about the answer of a query on a graph, just by considering the query and the summary.

6.1.5. *Tatooine*

We developed lightweight data integration system called Tatooine, based on our discussions with our journalist partners in the ANR ContentCheck project from the team “Les Décodeurs”. Tatooine allows to exploit heterogeneous data sources of different data models, which we view as a mixed data instance, by querying them together; Tatooine combines data from various sources within an integrated engine complemented by information extraction and data visualization modules. Figure 1 illustrates the functioning of Tatooine through screen captures: a set of tweets (JSON documents stored in SOLR) obtained through a full-text search are combined with information about their authors (RDF metadata stored in Jena TDB) and the results are presented to the users highlighting the political affiliation of the tweet authors.

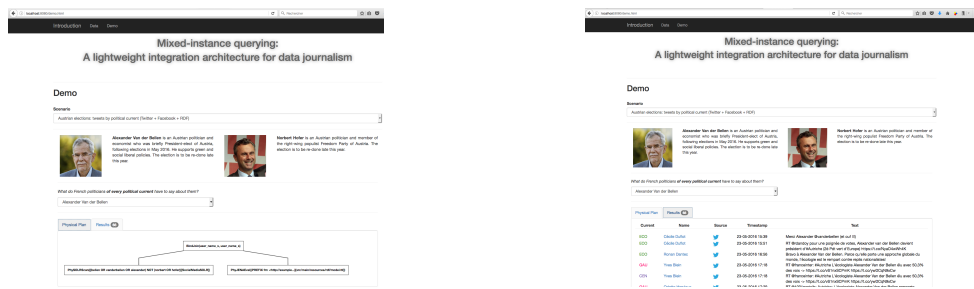


Figure 1. Tweet enrichment in Tatooine: evaluation plan (left) and results (right).

DAHU Project-Team (section vide)

EX-SITU Team

6. New Software and Platforms

6.1. New Software

6.1.1. WildOS

Participant: Michel Beaudouin-Lafon [correspondant].

WildOS is middleware designed to support applications that run in an interactive room, such as our WILD and WILDER rooms, with various interaction resources, including a tiled wall display, a motion tracking system, interactive tabletops, tablets, smartphones and custom-made or 3d printed interactive devices. The conceptual model of *WildOS* is a *platform*, such as the WILD or WILDER room, that can be described as a set of devices on which one or more applications can be run.

WildOS consists of a server running on a machine that has network access to all the machines involved in the platform, and a set of clients running on the various interaction resources, such as a display cluster or a tablet. Once *WildOS* is running, applications can be started and stopped and devices can be added to or removed from the platform.

WildOS relies on Web technologies, most notably Javascript and node.js, as well as node-webkit and HTML5. This makes it inherently portable (it is currently tested on Mac OS X and Linux). While applications can be developed only with these Web technologies, it is also possible to bridge to existing applications developed in other environments if they provide sufficient access for remote control. Sample applications include a web browser, an image viewer, a window manager, and the BrainTwister application developed in collaboration with neuroanatomists at NeuroSpin.

WildOS is used for several research projects at ExSitu and by other partners of the Digiscope project. It was also deployed on several of Google's interactive rooms in Mountain View, Dublin and Paris. It is available under an Open Source licence at <https://bitbucket.org/mblinsitu/wildos>.

- ACM: H.5.2 [User Interfaces]: Graphical user interfaces (GUI)
- Software benefit: helps development of multisurface applications.
- OS/Middleware: Crossplatform
- Required library or software: node.js, node-webkit
- Programming language: Javascript

6.1.2. Unity Cluster

Participants: Cédric Fleury [correspondant], Olivier Gladin, Jean-Baptiste Louvet.

Unity Cluster is middleware to distribute any Unity 3D (<https://unity3d.com/>) application on a cluster of computers that run in interactive rooms, such as our WILD and WILDER rooms, or immersive CAVES (Computer-Augmented Virtual Environments). Users can interact with the application with various interaction resources.

Unity Cluster provides an easy solution for running existing Unity 3D applications on any display that requires a rendering cluster with several computers. *Unity Cluster* is based on a master-slave architecture: The master computer runs the main application and the physical simulation as well as manages the input; the slave computers receive updates from the master and render small parts of the 3D scene. *Unity Cluster* manages data distribution and synchronization among the computers to obtain a consistent image on the entire wall-sized display surface.

Unity Cluster can also deform the displayed images according to the user's position in order to match the viewing frustum defined by the user's head and the four corners of the screens. This respects the motion parallax of the 3D scene, giving users a better sense of depth.

Unity Cluster is composed of a set of C Sharp scripts that manage the network connection, data distribution, and the deformation of the viewing frustum. In order to distribute an existing application on the rendering cluster, all scripts must be embedded into a Unity package that is included in an existing Unity project.

- ACM: C.2.4 [Distributed Systems]: Distributed applications, I.3.7 [3D Graphics and Realism]: Virtual reality
- Software benefit: adapts existing Unity 3D application to a rendering cluster of an interactive room.
- OS/Middleware: Crossplatform
- Required library or software: Unity 3D
- Programming language: C Sharp

6.2. Platforms

6.2.1. WILDER

Participants: Michel Beaudouin-Lafon [correspondant], Cédric Fleury, Olivier Gladin, Rémi Hellequin, Stéphane Huot, Amani Kooli, Monireh Sanaei, Gabriel Tezier, Jonathan Thorpe.

WILDER (Figure 1) is our second experimental ultra-high-resolution interactive environment, which follows the WILD platform developed in 2009 [2]. It features a wall-sized display with seventy-five 20" LCD screens, i.e. a 5m50 x 1m80 (18' x 6') wall displaying 14 400 x 4 800 = 69 million pixels, powered by a 10-computer cluster and two front-end computers. The platform also features a camera-based motion tracking system that lets users interact with the wall, as well as the surrounding space, with various mobile devices. The display uses a multitouch frame (the largest of its kind in the world) to make the entire wall touch sensitive.

WILDER was inaugurated in June, 2015. It is one of the ten platforms of the Digiscope Equipment of Excellence and, in combination with WILD and the other Digiscope rooms, provides a unique experimental environment for collaborative interaction.

In addition to using WILD and WILDER for our research, we have also developed software architectures and toolkits, such as WildOS and Unity Cluster, that enable developers to run applications on these multi-device, cluster-based systems.

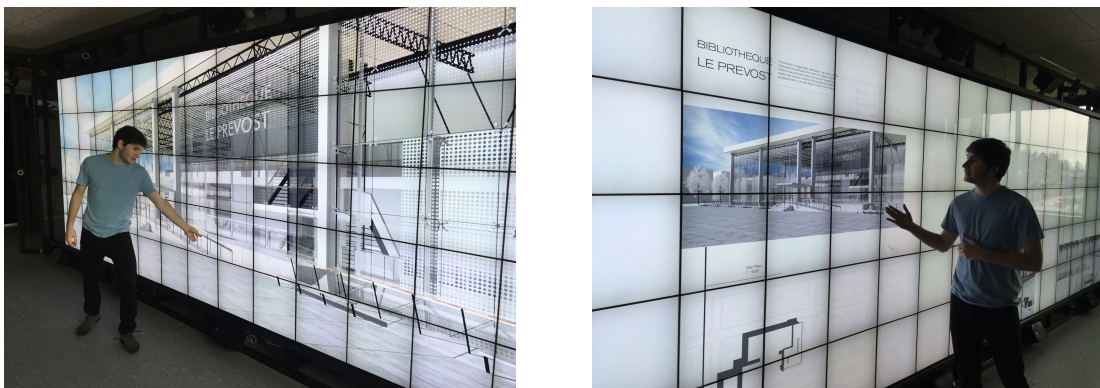


Figure 1. The WILDER platform.

ILDA Project-Team

6. New Software and Platforms

6.1. Smarties

FUNCTIONAL DESCRIPTION

The Smarties system provides an easy way to add mobile interactive support to collaborative applications for wall displays.

It consists of (i) a mobile interface that runs on mobile devices for input, (ii) a communication protocol between the mobiles and the wall application, and (iii) libraries that implement the protocol and handle synchronization, locking and input conflicts. The library presents the input as an event loop with callback functions and handles all communication between mobiles and wall application. Developers can customize the mobile interface from the wall application without modifying the mobile interface code.

On each mobile we find a set of cursor controllers associated with keyboards, widgets and clipboards. These controllers (pucks) can be shared by multiple collaborating users. They can control simple cursors on the wall application, or specific content (objects or groups of them). The developer can decide the types of widgets associated to pucks from the wall application side.

- Contact: Olivier Chapuis
- URL: <http://smarties.lri.fr/>

Smarties was used in the projects that led to the following publications this year: [7], [8], [22].

6.2. ZVTM

Zoomable Visual Transformation Machine

KEYWORDS: Information visualization - Data visualization - Visualization - Big data - Graph visualization

FUNCTIONAL DESCRIPTION

ZVTM is a toolkit enabling the implementation of multi-scale interfaces for interactively navigating in large datasets displayed as 2D graphics.

ZVTM is used for browsing large databases in multiple domains: geographical information systems, control rooms of complex facilities, astronomy, power distribution systems.

The toolkit also enables the development of applications running on ultra-high-resolution wall-sized displays.

- Participants: Caroline Appert, Maria Jesus Lobo Gunther, Arnaud Prouzeau, Hande Ozaygen, Can Liu and Olivier Chapuis
- Contact: Emmanuel Pietriga
- URL: <http://zvtm.sf.net>

Smarties was used in the projects that led to the following publications this year: [7], [8], [22], [19], [21].

6.3. Platforms

6.3.1. Platform: WILDER

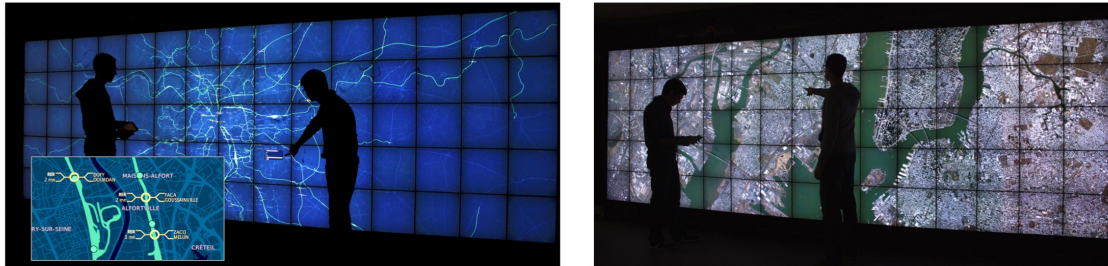


Figure 2. Geovisualization applications running on the WILDER platform. Real-time monitoring of railroad traffic in France (left), large-scale high-resolution orthoimagery visualization (right).

Ultra-high-resolution wall-sized displays [33] feature a very high pixel density over a large physical surface. Such platforms have properties that make them well-suited to the visualization of very large datasets. They can represent the data with a high level of detail while at the same time retaining context: users can transition from an overview of the data to a detailed view simply by physically moving in front of the wall display. Wall displays also offer good support for collaborative work, enabling multiple users to simultaneously visualize and interact with the displayed data. To make them interactive, wall-sized displays are increasingly coupled with input devices such as touch frames, motion-tracking systems and wireless multitouch devices, in order to enable multi-device and multi-user interaction with the displayed data. Application areas for such visualization platforms range from the monitoring of complex infrastructures and crisis management situations to tools for the exploratory visualization of scientific data.

WILDER is the latest ultra-high-resolution wall-sized display set up at Inria Saclay, and is one of the nodes of the Digiscope EquipEx. We use this platform for multiple projects, both fundamental HCI research, and research and development activities for specific application areas such as geographical informations systems (Figure 2) and astronomy (see Figure 3).

WILDER was used in the projects that led to the following publications this year: [7], [8], [22], [19], [23].

6.3.2. Platform: ANDES

ANDES is a platform similar to WILDER, set up at Inria in Santiago de Chile, that we use both as a research platform and as a showroom of our research and development activities. ANDES is the main platform used for our collaborative research project with the Millenium Institute of Astrophysics on the visualization of large FITS images (see Figure 3).

ANDES was used in the projects that led to the following publications this year: [7].

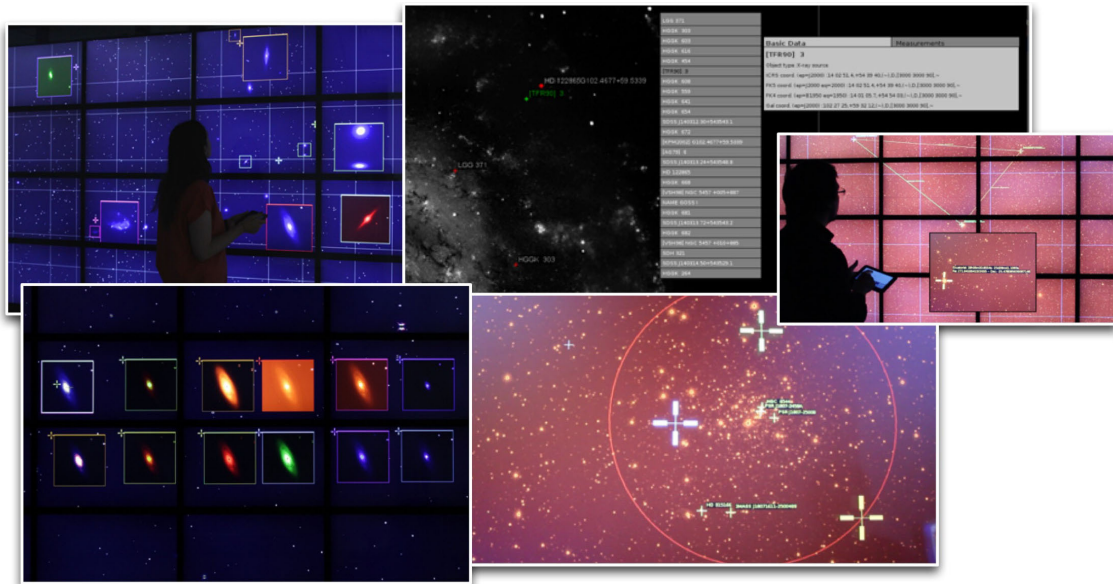


Figure 3. Visualization of high-dynamic-range FITS images and associated data catalogs in the domain of Astronomy on ANDES (collaboration with Inria Chile, Millenium Institute of Astrophysics, and Institut d'Astrophysique Spatiale).

SMIS Project-Team

5. New Software and Platforms

5.1. PLUG-DB ENGINE

FUNCTIONAL DESCRIPTION: PlugDB is a complete platform dedicated to a secure and ubiquitous management of personal data. It aims at providing an alternative to a systematic centralization of personal data. The PlugDB engine is a personal database server capable of storing data (tuples and documents) in tables and BLOBs, indexing them, querying them in SQL, sharing them through assertional access control policies and enforcing transactional properties (atomicity, integrity, durability) [4]. The PlugDB engine is embedded in a tamper-resistant hardware device combining the security of smartcard with the storage capacity of NAND Flash. The personal database is hosted encrypted in NAND Flash and the PlugDB engine code runs in the microcontroller. Complementary modules allow to pre-compile SQL queries for the applications, communicate with the DBMS from a remote Java program, synchronize local data with remote servers (typically used for recovering the database in the case of a broken or lost devices) and participate in distributed computation (e.g., global queries). PlugDB runs both on secure devices provided by Gemalto and on specific secure devices designed by SMIS and assembled by electronic SMEs. Mastering the hardware platform opens up new research and experiment opportunities (e.g., we have recently integrated a Bluetooth module to communicate wirelessly with PlugDB and a fingerprint module to strongly authenticate users) and allows us to engage ourselves in an open-source/open hardware initiative. Open-SW/open-HW contributes to the trust the community of users can put in any privacy preserving solution and is key to enable a diversity of solutions, hence decreasing the risk of class attacks. PlugDB engine has been registered first at APP (Agence de Protection des Programmes) in 2009 - a new version being registered every two years and the hardware datasheets in 2015. PlugDB has been experimented in the field, notably in the healthcare domain. We also recently set up an educational platform on top of PlugDB, named SIPD (Système d'Information privacy-by-Design) and used at ENSIIE, INSA CVL and UVSQ through the Versailles Sciences Lab fablab, to raise students awareness of privacy protection problems and embedded programming. As a conclusion, PlugDB combines several research contributions from the team, at the crossroads of flash data management, embedded data processing and secure distributed computations. It then strongly federates all members of our team (permanent members, PhD students and engineers). It is also a vector of visibility, technological transfer and dissemination and gives us the opportunity to collaborate with researchers from other disciplines around a concrete privacy enhancing platform.

- Participants: Nicolas Anciaux, Luc Bouganim, Philippe Pucheral and Aydogan Ersoz
- Contact: Nicolas Anciaux
- URL: <https://project.inria.fr/plugdb/>

5.2. Privacy Preserving Mobile Laboratory

FUNCTIONAL DESCRIPTION: We have started to design a privacy preserving mobile laboratory used as an experimental platform for multidisciplinary research launched 'in vivo'. The goal is to conduct reliable surveys and avoid the privacy paradox (what users declare on their privacy behavior is far from what they effectively do). The platform, built on top of PlugDB, includes two android applications, a "server" which takes as input a questionnaire description and broadcast it on demand to the client applications. Users interact with the questionnaire on the client applications, storing the detailed answers in their PlugDB personal server. Then a secure distributed computation takes place (between users' PlugDB servers) and computes non-sensitive global statistics based on potentially sensitive raw answers. A beta-version of this platform was developed during the PhD of Athanasia Katsouraki and was used for a pre-experimentation targeting 140 students. While the experiment was successful, it showed the limitation and complexity of the initial setting (laptops, required Internet access, complexity in the questionnaire deployment). We designed and implement a second platform running on android tablets with a local router and automatic questionnaire deployment. The platform has been

demonstrated in several forums and very recently at the Sénat in Paris. This platform represents a backing for two PhD theses on privacy (the first one in economics, the second one in our team) funded in 2016 by the interdisciplinary doctoral program at UPSay (IDI 2016).

- Participants: Nicolas Anciaux, Luc Bouganim, Aydogan Ersoz, Athanasia Katsouraki, Riad Ladjel, Benjamin Nguyen, Remy Pasquion, Paul Tran Van
- Contact: Luc Bouganim
- URL: <https://project.inria.fr/plugdb/en/PPML>